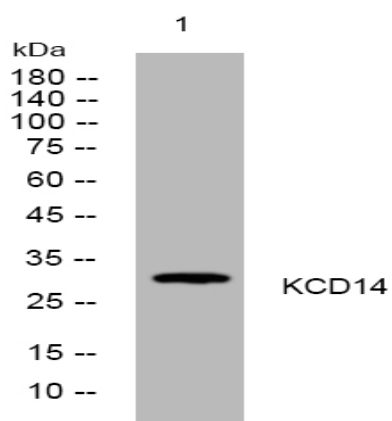


KCD14 rabbit pAb

Catalog No :	YT7010
Reactivity :	Human
Applications :	WB
Target :	KCD14
Gene Name :	KCTD14
Protein Name :	KCD14
Human Gene Id :	65987
Human Swiss Prot No :	Q9BQ13
Immunogen :	Synthesized peptide derived from human KCD14 AA range: 149-199
Specificity :	This antibody detects endogenous levels of KCD14 at Human
Formulation :	Liquid in PBS containing 50% glycerol, 0.5% BSA and 0.02% sodium azide.
Source :	Polyclonal, Rabbit,IgG
Dilution :	WB 1[?]500-2000
Purification :	The antibody was affinity-purified from rabbit antiserum by affinity-chromatography using epitope-specific immunogen.
Concentration :	1 mg/ml
Storage Stability :	-15°C to -25°C/1 year(Do not lower than -25°C)
Molecularweight :	28kD
Function :	similarity:Contains 1 BTB (POZ) domain.,

Sort :	<u>8848</u>
No4 :	<u>1</u>
Host :	<u>Rabbit</u>
Modifications :	<u>Unmodified</u>

Products Images



Western blot analysis of lysates from MCF-7 cells, primary antibody was diluted at 1:1000, 4° over night