

## SDS3 rabbit pAb

<b>Catalog No :</b>	YT7009
<b>Reactivity :</b>	Human;Mouse
<b>Applications :</b>	WB;IHC
<b>Target :</b>	SDS3
<b>Gene Name :</b>	SUDS3 SAP45 SDS3
<b>Protein Name :</b>	SDS3
<b>Human Gene Id :</b>	64426
<b>Human Swiss Prot No :</b>	Q9H7L9
<b>Mouse Gene Id :</b>	71954
<b>Mouse Swiss Prot No :</b>	Q8BR65
<b>Immunogen :</b>	Synthesized peptide derived from human SDS3 AA range: 96-146
<b>Specificity :</b>	This antibody detects endogenous levels of SDS3 at Human/Mouse
<b>Formulation :</b>	Liquid in PBS containing 50% glycerol, 0.5% BSA and 0.02% sodium azide.
<b>Source :</b>	Polyclonal, Rabbit,IgG
<b>Dilution :</b>	WB 1:500-2000;IHC 1:50-300
<b>Purification :</b>	The antibody was affinity-purified from rabbit antiserum by affinity-chromatography using epitope-specific immunogen.
<b>Concentration :</b>	1 mg/ml
<b>Storage Stability :</b>	-15°C to -25°C/1 year(Do not lower than -25°C)

---

**Molecularweight :** 36kD

---

**Background :** SDS3 is a subunit of the histone deacetylase (see HDAC1; MIM 601241)-dependent SIN3A (MIM 607776) corepressor complex (Fleischer et al., 2003 [PubMed 12724404]).[supplied by OMIM, Mar 2008],

---

**Function :** domain:The C-terminus is involved in transcriptional repression by HDAC-independent mechanisms.,function:Regulatory protein which represses transcription and augments histone deacetylase activity of HDAC1. May have a potential role in tumor suppressor pathways (By similarity). May function in the assembly and/or enzymatic activity of the mSin3A corepressor complex or in mediating interactions between the complex and other regulatory complexes.,similarity:Belongs to the SDS3 family.,subunit:Homodimer. Component of the SIN3 histone deacetylase (HDAC) corepressor complex. Interacts with SIN3A. Interaction with SIN3B enhances the interaction between SIN3B and HDAC1 to form a complex (By similarity). Interacts with HCFC1. Component of a mSin3A corepressor complex that contains SIN3A, SAP130, SUDS3/SAP45, ARID4B/SAP180, HDAC1 and HDAC2.,tissue specificity:Expressed in various cancer cell ines.

---

**Subcellular Location :** Nucleus .

---

**Expression :** Expressed in various cancer cell ines.

---

**Sort :** 16199

---

**No4 :** 1

---

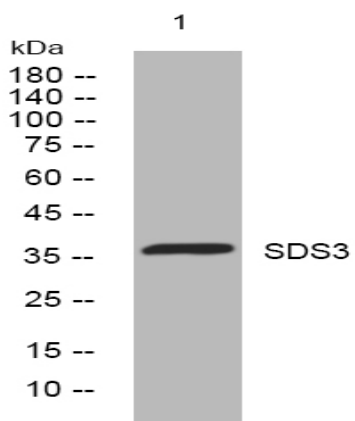
**Host :** Rabbit

---

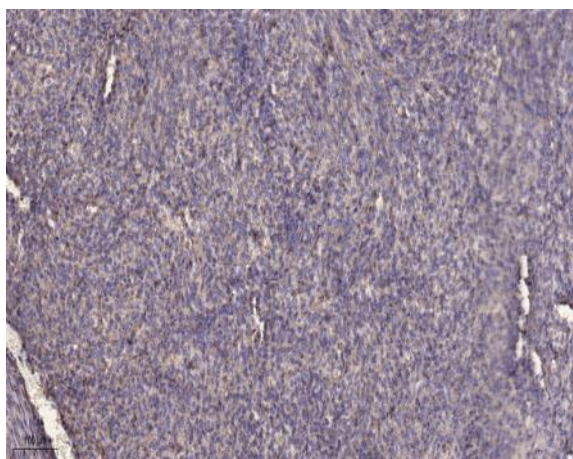
**Modifications :** Unmodified

---

## Products Images



Western blot analysis of lysates from 293T cells, primary antibody was diluted at 1:1000, 4° over night



Immunohistochemical analysis of paraffin-embedded human Colon cancer. 1, Antibody was diluted at 1:200(4° overnight). 2, Tris-EDTA,pH9.0 was used for antigen retrieval. 3,Secondary antibody was diluted at 1:200(room temperature, 45min).