

EPAG rabbit pAb

Catalog No :	YT7007
Reactivity :	Human
Applications :	WB
Target :	EPAG
Gene Name :	EPAG
Protein Name :	EPAG
Human Swiss Prot No :	Q14236
Immunogen :	Synthesized peptide derived from human EPAG AA range: 50-100
Specificity :	This antibody detects endogenous levels of EPAG at Human
Formulation :	Liquid in PBS containing 50% glycerol, 0.5% BSA and 0.02% sodium azide.
Source :	Polyclonal, Rabbit,IgG
Dilution :	WB 1:500-2000
Purification :	The antibody was affinity-purified from rabbit antiserum by affinity-chromatography using epitope-specific immunogen.
Concentration :	1 mg/ml
Storage Stability :	-15°C to -25°C/1 year(Do not lower than -25°C)
Molecularweight :	16kD
Function :	function:May function as an early signal that helps mediate the activation of T cells.,tissue specificity:Expressed in heart, kidney, lung, and skeletal muscle, with lower levels in pancreas and liver.,
Expression :	Expressed in heart, kidney, lung, and skeletal muscle, with lower levels in

pancreas and liver.

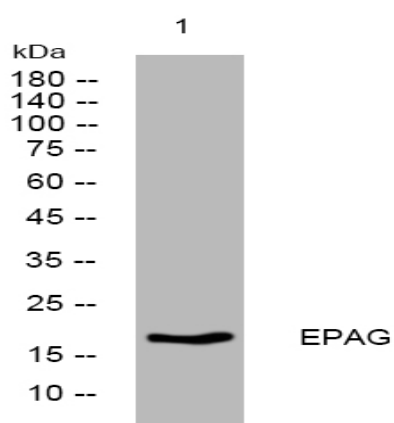
Sort : 5589

No4 : 1

Host : Rabbit

Modifications : Unmodified

Products Images



Western blot analysis of lysates from U2OS cells, primary antibody was diluted at 1:1000, 4° over night