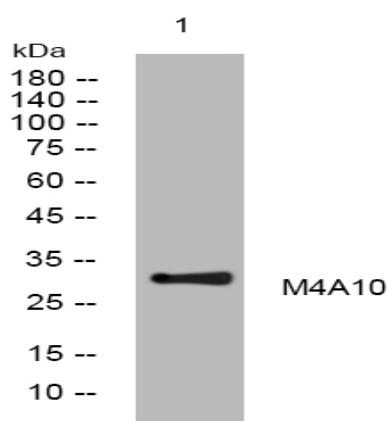


M4A10 rabbit pAb

Catalog No :	YT7004
Reactivity :	Human;Mouse
Applications :	WB
Target :	M4A10
Gene Name :	MS4A10 CD20L7 MS4A9
Protein Name :	M4A10
Human Gene Id :	341116
Human Swiss Prot No :	Q96PG2
Mouse Gene Id :	69826
Mouse Swiss Prot No :	Q99N03
Immunogen :	Synthesized peptide derived from human M4A10 AA range: 6-56
Specificity :	This antibody detects endogenous levels of M4A10 at Human/Mouse
Formulation :	Liquid in PBS containing 50% glycerol, 0.5% BSA and 0.02% sodium azide.
Source :	Polyclonal, Rabbit,IgG
Dilution :	WB 1[?]500-2000
Purification :	The antibody was affinity-purified from rabbit antiserum by affinity-chromatography using epitope-specific immunogen.
Concentration :	1 mg/ml
Storage Stability :	-15°C to -25°C/1 year(Do not lower than -25°C)

Molecularweight :	29kD
Background :	Most MS4A genes, including MS4A10, encode proteins with at least 4 potential transmembrane domains and N- and C-terminal cytoplasmic domains encoded by distinct exons.[supplied by OMIM, Apr 2004],
Function :	function:May be involved in signal transduction as a component of a multimeric receptor complex.,similarity:Belongs to the MS4A family.,
Subcellular Location :	Membrane ; Multi-pass membrane protein .
Sort :	9315
No4 :	1
Host :	Rabbit
Modifications :	Unmodified

Products Images



Western blot analysis of lysates from HeLa cells, primary antibody was diluted at 1:1000, 4 ° over night