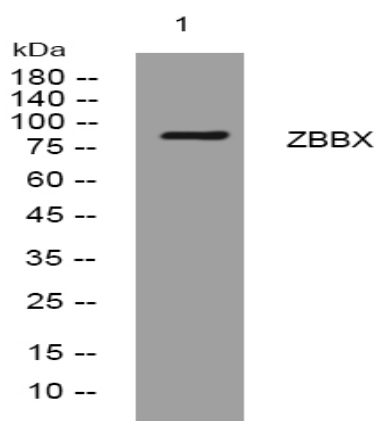


ZBBX rabbit pAb

Catalog No :	YT7003
Reactivity :	Human;Mouse
Applications :	WB
Target :	ZBBX
Gene Name :	ZBBX
Protein Name :	ZBBX
Human Gene Id :	79740
Human Swiss Prot No :	A8MT70
Mouse Gene Id :	213234
Mouse Swiss Prot No :	Q0P5X5
Immunogen :	Synthesized peptide derived from human ZBBX AA range: 295-345
Specificity :	This antibody detects endogenous levels of ZBBX at Human/Mouse
Formulation :	Liquid in PBS containing 50% glycerol, 0.5% BSA and 0.02% sodium azide.
Source :	Polyclonal, Rabbit,IgG
Dilution :	WB 1:500-2000
Purification :	The antibody was affinity-purified from rabbit antiserum by affinity-chromatography using epitope-specific immunogen.
Concentration :	1 mg/ml
Storage Stability :	-15°C to -25°C/1 year(Do not lower than -25°C)

Molecularweight :	88kD
Function :	similarity:Contains 1 B box-type zinc finger.,
Subcellular Location :	intracellular,
Sort :	24456
No4 :	1
Host :	Rabbit
Modifications :	Unmodified

Products Images



Western blot analysis of lysates from HpeG2 cells, primary antibody was diluted at 1:1000, 4° over night