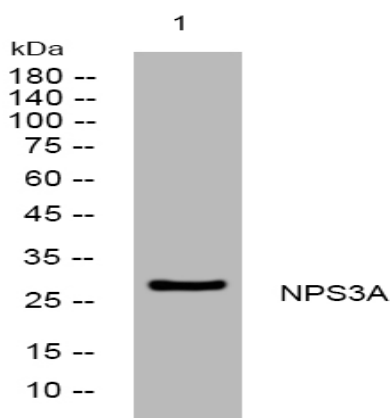


NPS3A rabbit pAb

Catalog No :	YT7000
Reactivity :	Human
Applications :	WB
Target :	NPS3A
Gene Name :	NIPSNAP3A NIPSNAP4 HSPC299
Protein Name :	NPS3A
Human Gene Id :	25934
Human Swiss Prot No :	Q9UFN0
Immunogen :	Synthesized peptide derived from human NPS3A AA range: 66-116
Specificity :	This antibody detects endogenous levels of NPS3A at Human
Formulation :	Liquid in PBS containing 50% glycerol, 0.5% BSA and 0.02% sodium azide.
Source :	Polyclonal, Rabbit,IgG
Dilution :	WB 1[?]500-2000
Purification :	The antibody was affinity-purified from rabbit antiserum by affinity-chromatography using epitope-specific immunogen.
Concentration :	1 mg/ml
Storage Stability :	-15 °C to -25 °C/1 year(Do not lower than -25 °C)
Molecularweight :	27kD
Background :	NIPSNAP3A belongs to a family of proteins with putative roles in vesicular transport (Buechler et al., 2004 [PubMed 15177564]).[supplied by OMIM, Mar 2008],

Function :	similarity:Belongs to the NipSnap family.,subcellular location:May be part of some vesicular structure distinct from lysosomal vesicles.,subunit:Interacts with the Salmonella typhimurium virulence protein spiC.,tissue specificity:Ubiquitous. Highly expressed in liver, kidney and muscle. Expressed at intermediate level in brain, heart, colon, thymus, kidney, small intestine, placenta, lung, leukocytes and spleen.,
Subcellular Location :	Cytoplasm, cytosol . May be part of some vesicular structure distinct from lysosomal vesicles.
Expression :	Ubiquitous. Highly expressed in liver, kidney and muscle. Expressed at intermediate level in brain, heart, colon, thymus, kidney, small intestine, placenta, lung, leukocytes and spleen.
Sort :	10953
No4 :	1
Host :	Rabbit
Modifications :	Unmodified

Products Images



Western blot analysis of lysates from MCF-7 cells, primary antibody was diluted at 1:1000, 4° over night