

PSD10 rabbit pAb

Catalog No :	YT6997
Reactivity :	Human;Mouse;Rat
Applications :	WB;ELISA;IHC
Target :	PSD10
Gene Name :	PSMD10
Protein Name :	PSD10
Human Gene Id :	5716
Human Swiss Prot No :	O75832
Mouse Swiss Prot No :	Q9Z2X2
Rat Gene Id :	116722
Rat Swiss Prot No :	Q9Z2X3
Immunogen :	Synthesized peptide derived from human PSD10 AA range: 86-136
Specificity :	This antibody detects endogenous levels of PSD10 at Human/Mouse/Rat
Formulation :	Liquid in PBS containing 50% glycerol, 0.5% BSA and 0.02% sodium azide.
Source :	Polyclonal, Rabbit,IgG
Dilution :	WB 1:500-2000;IHC 1:50-300; ELISA 2000-20000
Purification :	The antibody was affinity-purified from rabbit antiserum by affinity-chromatography using epitope-specific immunogen.
Concentration :	1 mg/ml

Storage Stability : -15°C to -25°C/1 year(Do not lower than -25°C)

Molecularweight : 25kD

Background : This gene encodes a subunit of the PA700/19S complex, which is the regulatory component of the 26S proteasome. The 26S proteasome complex is required for ubiquitin-dependent protein degradation. This protein is a non-ATPase subunit that may be involved in protein-protein interactions. Aberrant expression of this gene may paly a role in tumorigenesis. Two transcripts encoding different isoforms have been described. Pseudogenes have been identified on chromosomes 3 and 20.[provided by RefSeq, Mar 2011],

Function : function:Acts as a regulatory subunit of the 26S proteasome which is involved in the ATP-dependent degradation of ubiquitinated proteins.,similarity:Contains 7 ANK repeats.,subunit:Component of the PA700 complex.,

Subcellular Location : Cytoplasm . Nucleus .

Expression : Tends to be up-regulated in cancer cells with RAS mutations, including lung cancers and adenocarconimas (at protein level).

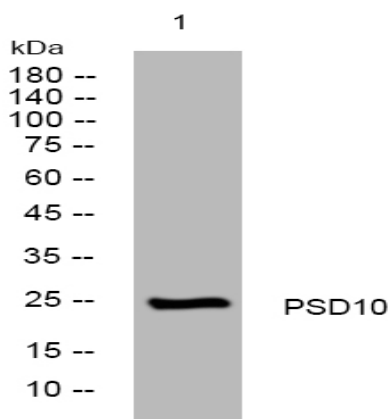
Sort : 13109

No4 : 1

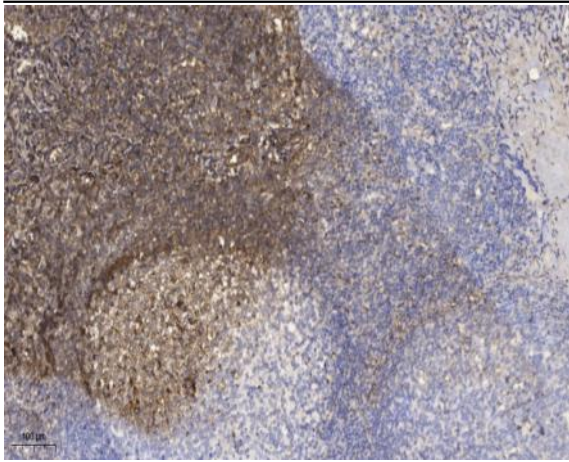
Host : Rabbit

Modifications : Unmodified

Products Images



Western blot analysis of lysates from HpeG2 cells, primary antibody was diluted at 1:1000, 4° over night



Immunohistochemical analysis of paraffin-embedded human tonsil. 1, Antibody was diluted at 1:200(4 ° overnight). 2, Tris-EDTA,pH9.0 was used for antigen retrieval. 3,Secondary antibody was diluted at 1:200(room temperature, 45min).