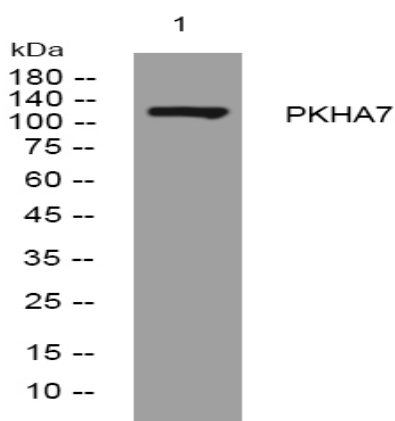


PKHA7 rabbit pAb

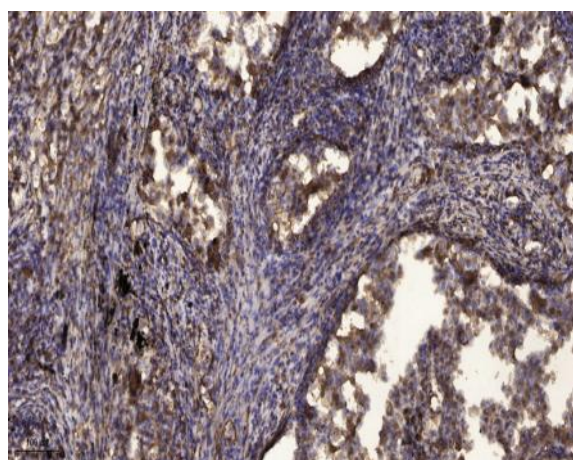
| | |
|------------------------------|---|
| Catalog No : | YT6994 |
| Reactivity : | Human;Mouse |
| Applications : | WB;ELISA;IHC |
| Target : | PKHA7 |
| Gene Name : | PLEKHA7 |
| Protein Name : | PKHA7 |
| Human Gene Id : | 144100 |
| Human Swiss Prot No : | Q6IQ23 |
| Mouse Gene Id : | 233765 |
| Mouse Swiss Prot No : | Q3UIL6 |
| Immunogen : | Synthesized peptide derived from human PKHA7 AA range: 96-146 |
| Specificity : | This antibody detects endogenous levels of PKHA7 at Human/Mouse |
| Formulation : | Liquid in PBS containing 50% glycerol, 0.5% BSA and 0.02% sodium azide. |
| Source : | Polyclonal, Rabbit,IgG |
| Dilution : | WB 1:500-2000;IHC 1:50-300; ELISA 2000-20000 |
| Purification : | The antibody was affinity-purified from rabbit antiserum by affinity-chromatography using epitope-specific immunogen. |
| Concentration : | 1 mg/ml |
| Storage Stability : | -15°C to -25°C/1 year(Do not lower than -25°C) |

| | |
|-------------------------------|--|
| Molecularweight : | 123kD |
| Function : | similarity:Contains 1 PH domain.,similarity:Contains 2 WW domains., |
| Subcellular Location : | Cell junction, adherens junction . Cytoplasm . Cytoplasm, cytoskeleton, microtubule organizing center, centrosome . Localizes to zonula adherens, recruited via its interaction with CTNND1. . |
| Sort : | 12786 |
| No4 : | 1 |
| Host : | Rabbit |
| Modifications : | Unmodified |

Products Images



Western blot analysis of lysates from PC-12 cells, primary antibody was diluted at 1:1000, 4° over night



Immunohistochemical analysis of paraffin-embedded human Squamous cell carcinoma of lung. 1, Antibody was diluted at 1:200(4° overnight). 2, Tris-EDTA,pH9.0 was used for antigen retrieval. 3,Secondary antibody was diluted at 1:200(room temperature, 45min).