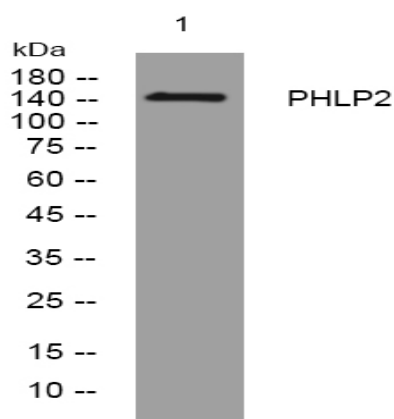


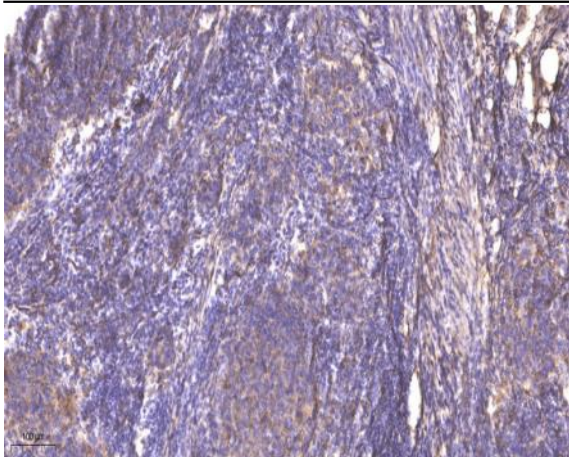
PHLP2 rabbit pAb

Catalog No :	YT6991
Reactivity :	Human;Mouse
Applications :	WB;IHC
Target :	PHLP2
Fields :	>>PI3K-Akt signaling pathway
Gene Name :	PHLPP2 KIAA0931 PHLPP1
Protein Name :	PHLP2
Human Gene Id :	23035
Human Swiss Prot No :	Q6ZVD8
Mouse Gene Id :	244650
Mouse Swiss Prot No :	Q8BXA7
Immunogen :	Synthesized peptide derived from human PHLP2 AA range: 381-431
Specificity :	This antibody detects endogenous levels of PHLP2 at Human/Mouse
Formulation :	Liquid in PBS containing 50% glycerol, 0.5% BSA and 0.02% sodium azide.
Source :	Polyclonal, Rabbit,IgG
Dilution :	WB 1:500-2000;IHC 1:50-300
Purification :	The antibody was affinity-purified from rabbit antiserum by affinity-chromatography using epitope-specific immunogen.
Concentration :	1 mg/ml

Storage Stability :	-15°C to -25°C/1 year(Do not lower than -25°C)
Molecularweight :	146kD
Subcellular Location :	Cytoplasm. Membrane; Peripheral membrane protein. Nucleus. In colorectal cancer tissue, expression is concentrated in the cytoplasm and nucleus.
Expression :	In colorectal cancer tissue, expression is highest in the surface epithelium of normal colonic mucosa adjacent to the cancer tissue but is largely excluded from the crypt bases. Expression is lost or significantly decreased in 80% of tested tumors (at protein level).
Sort :	11896
No4 :	1
Host :	Rabbit
Modifications :	Unmodified

Products Images





Immunohistochemical analysis of paraffin-embedded human cervical carcinoma. 1, Antibody was diluted at 1:200(4 ° overnight). 2, Tris-EDTA,pH9.0 was used for antigen retrieval. 3,Secondary antibody was diluted at 1:200(room temperature, 45min).