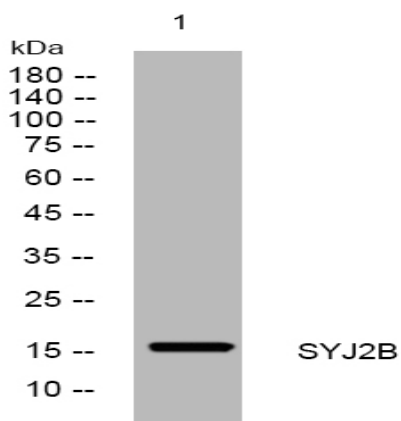


SYJ2B rabbit pAb

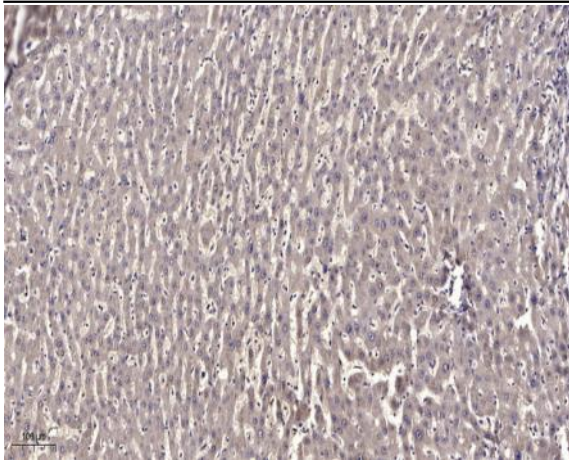
Catalog No :	YT6985
Reactivity :	Human;Mouse;Rat
Applications :	WB;IHC
Target :	SYJ2B
Gene Name :	SYNJ2BP OMP25
Protein Name :	SYJ2B
Human Gene Id :	55333
Human Swiss Prot No :	P57105
Mouse Gene Id :	24071
Mouse Swiss Prot No :	Q9D6K5
Rat Gene Id :	64531
Rat Swiss Prot No :	Q9WVJ4
Immunogen :	Synthesized peptide derived from human SYJ2B AA range: 83-133
Specificity :	This antibody detects endogenous levels of SYJ2B at Human/Mouse/Rat
Formulation :	Liquid in PBS containing 50% glycerol, 0.5% BSA and 0.02% sodium azide.
Source :	Polyclonal, Rabbit,IgG
Dilution :	WB 1:500-2000;IHC 1:50-300
Purification :	The antibody was affinity-purified from rabbit antiserum by affinity-chromatography using epitope-specific immunogen.

Concentration :	1 mg/ml
Storage Stability :	-15°C to -25°C/1 year(Do not lower than -25°C)
Molecularweight :	16kD
Function :	similarity:Contains 1 PDZ (DHR) domain.,subunit:Binds (via the PDZ domain) to isoform 2A of SYNJ2 (via the unique motif in the C-terminus),.
Subcellular Location :	Mitochondrion outer membrane .
Sort :	16789
No4 :	1
Host :	Rabbit
Modifications :	Unmodified

Products Images



Western blot analysis of lysates from A549 cells, primary antibody was diluted at 1:1000, 4° over night



Immunohistochemical analysis of paraffin-embedded human liver cancer. 1, Antibody was diluted at 1:200(4° overnight). 2, Tris-EDTA,pH9.0 was used for antigen retrieval. 3,Secondary antibody was diluted at 1:200(room temperature, 45min).