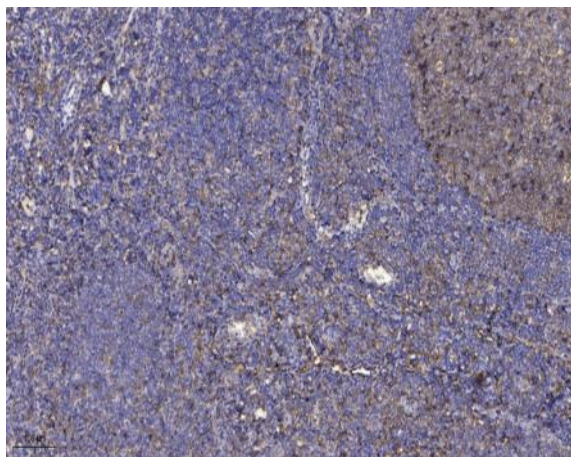


RFL3S rabbit pAb

Catalog No :	YT6980
Reactivity :	Human
Applications :	IHC;IF
Target :	RFL3S
Gene Name :	RFPL3-AS1 RFPL3S
Protein Name :	RFL3S
Human Swiss Prot No :	P0C7P2
Immunogen :	Synthesized peptide derived from human RFL3S AA range: 22-72
Specificity :	This antibody detects endogenous levels of RFL3S at Human
Formulation :	Liquid in PBS containing 50% glycerol, 0.5% BSA and 0.02% sodium azide.
Source :	Polyclonal, Rabbit,IgG
Dilution :	IHC 1:50-200. IF 1:50-200
Purification :	The antibody was affinity-purified from rabbit antiserum by affinity-chromatography using epitope-specific immunogen.
Concentration :	1 mg/ml
Storage Stability :	-15°C to -25°C/1 year(Do not lower than -25°C)
Molecularweight :	12kD
Expression :	Strongly expressed in the testis and weakly in brain, placenta and pancreas.
Sort :	14411

No4 :	<u>1</u>
Host :	<u>Rabbit</u>
Modifications :	<u>Unmodified</u>

Products Images



Immunohistochemical analysis of paraffin-embedded human tonsil. 1, Antibody was diluted at 1:200(4° overnight). 2, Tris-EDTA,pH9.0 was used for antigen retrieval. 3,Secondary antibody was diluted at 1:200(room temperature, 30min).