

CENPX rabbit pAb

Catalog No :	YT6972
Reactivity :	Human;Mouse
Applications :	IHC;IF
Target :	CENPX
Fields :	>>Fanconi anemia pathway
Gene Name :	STRA13 CENPX FAAP10 MHF2
Protein Name :	CENPX
Human Gene Id :	201254
Human Swiss Prot No :	A8MT69
Mouse Gene Id :	20892
Mouse Swiss Prot No :	Q8C4X1
Immunogen :	Synthesized peptide derived from human CENPX AA range: 28-78
Specificity :	This antibody detects endogenous levels of CENPX at Human/Mouse
Formulation :	Liquid in PBS containing 50% glycerol, 0.5% BSA and 0.02% sodium azide.
Source :	Polyclonal, Rabbit,IgG
Dilution :	IHC 1:50-200. IF 1:50-200
Purification :	The antibody was affinity-purified from rabbit antiserum by affinity-chromatography using epitope-specific immunogen.
Concentration :	1 mg/ml

Storage Stability : -15°C to -25°C/1 year(Do not lower than -25°C)

Molecularweight : 9kD

Subcellular Location : Nucleus . Chromosome, centromere . Chromosome, centromere, kinetochore . Assembly of CENPS and CENPX and its partner subunits CENPT and CENPW at centromeres occurs through a dynamic exchange mechanism. Although exchange is continuous in the cell cycle, de novo assembly starts principally during mid-late S phase and is complete by G2. CENPX being less stably bound at the kinetochore than CENPS. .

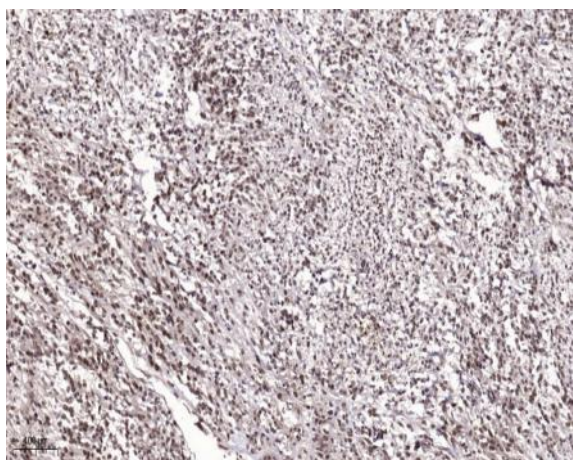
Sort : 3843

No4 : 1

Host : Rabbit

Modifications : Unmodified

Products Images



Immunohistochemical analysis of paraffin-embedded human Colon cancer. 1, Antibody was diluted at 1:200(4° overnight). 2, Tris-EDTA,pH9.0 was used for antigen retrieval. 3,Secondary antibody was diluted at 1:200(room temperature, 45min).