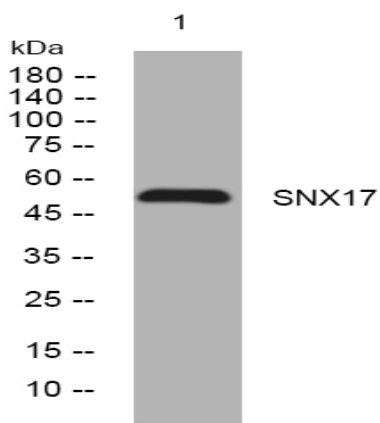


SNX17 rabbit pAb

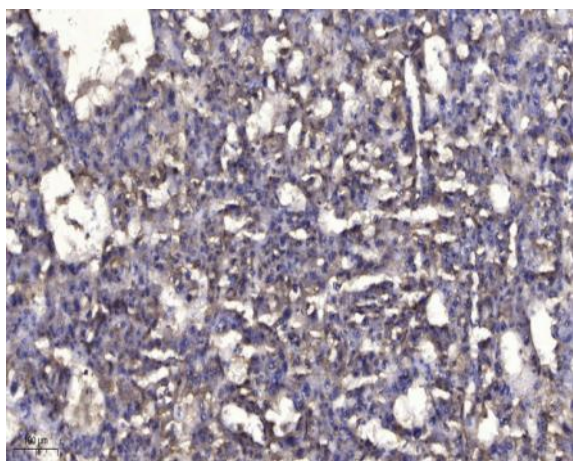
Catalog No :	YT6969
Reactivity :	Human;Mouse;Rat
Applications :	WB;IHC
Target :	SNX17
Gene Name :	SNX17 KIAA0064
Protein Name :	SNX17
Human Gene Id :	9784
Human Swiss Prot No :	Q15036
Mouse Gene Id :	266781
Mouse Swiss Prot No :	Q8BVL3
Rat Gene Id :	298836
Rat Swiss Prot No :	Q6AYS6
Immunogen :	Synthesized peptide derived from human SNX17 AA range: 398-448
Specificity :	This antibody detects endogenous levels of SNX17 at Human/Mouse/Rat
Formulation :	Liquid in PBS containing 50% glycerol, 0.5% BSA and 0.02% sodium azide.
Source :	Polyclonal, Rabbit,IgG
Dilution :	WB 1:500-2000;IHC 1:50-300
Purification :	The antibody was affinity-purified from rabbit antiserum by affinity-chromatography using epitope-specific immunogen.

Concentration :	1 mg/ml
Storage Stability :	-15°C to -25°C/1 year(Do not lower than -25°C)
Molecularweight :	52kD
Background :	This gene encodes a member of the sorting nexin family. Members of this family contain a phox (PX) domain, which is a phosphoinositide binding domain, and are involved in intracellular trafficking. This protein does not contain a coiled coil region, like some family members, but contains a B41 domain. This protein interacts with the cytoplasmic domain of P-selectin, and may function in the intracellular trafficking of P-selectin. Alternative splicing results in multiple transcript variants encoding different isoforms. [provided by RefSeq, May 2012],
Function :	domain:The PX domain is required for association with endosomes.,function:May be involved in protein trafficking.,similarity:Belongs to the sorting nexin family.,similarity:Contains 1 PX (phox homology) domain.,similarity:Contains 1 Ras-associating domain.,subcellular location:Associated with early endosomes.,subunit:Interacts with the C-termini of P-selectin, PTC, LDLR, VLDLR, LRP1 and LRP8.,
Subcellular Location :	Cytoplasm . Early endosome . Cytoplasmic vesicle membrane ; Peripheral membrane protein ; Cytoplasmic side .
Sort :	16479
No4 :	1
Host :	Rabbit
Modifications :	Unmodified

Products Images



Western blot analysis of lysates from DU145 cells, primary antibody was diluted at 1:1000, 4° over night



Immunohistochemical analysis of paraffin-embedded human liver cancer. 1, Antibody was diluted at 1:200(4° overnight). 2, Tris-EDTA,pH9.0 was used for antigen retrieval. 3,Secondary antibody was diluted at 1:200(room temperature, 45min).