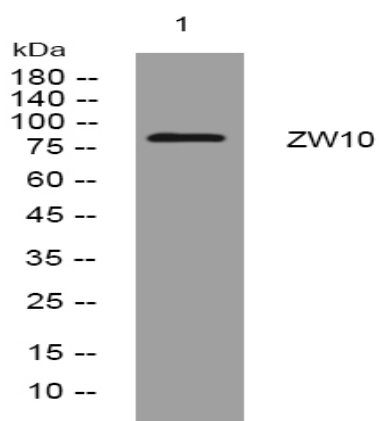


ZW10 rabbit pAb

Catalog No :	YT6967
Reactivity :	Human;Mouse;Rat
Applications :	WB
Target :	ZW10
Gene Name :	ZW10
Protein Name :	ZW10
Human Gene Id :	9183
Human Swiss Prot No :	O43264
Mouse Gene Id :	26951
Mouse Swiss Prot No :	O54692
Rat Gene Id :	363059
Rat Swiss Prot No :	Q4V8C2
Immunogen :	Synthesized peptide derived from human ZW10 AA range: 38-88
Specificity :	This antibody detects endogenous levels of ZW10 at Human/Mouse/Rat
Formulation :	Liquid in PBS containing 50% glycerol, 0.5% BSA and 0.02% sodium azide.
Source :	Polyclonal, Rabbit,IgG
Dilution :	WB 1:500-2000
Purification :	The antibody was affinity-purified from rabbit antiserum by affinity-chromatography using epitope-specific immunogen.

Concentration :	1 mg/ml
Storage Stability :	-15°C to -25°C/1 year(Do not lower than -25°C)
Molecularweight :	86kD
Background :	This gene encodes a protein that is one of many involved in mechanisms to ensure proper chromosome segregation during cell division. This protein is an essential component of the mitotic checkpoint, which prevents cells from prematurely exiting mitosis. [provided by RefSeq, Aug 2011],
Function :	developmental stage:No significant variation in expression during cell cycle.,function:Essential component of the mitotic checkpoint, which prevents cells from prematurely exiting mitosis. Required for the assembly of the dynein-dynactin and MAD1-MAD2 complexes onto kinetochores. Involved in regulation of membrane traffic between the Golgi and the endoplasmic reticulum.,miscellaneous:Overexpression as well as silencing of ZW10 disrupts the morphology of the ER-Golgi intermediate compartment as well as the Golgi apparatus and slows down ER-Golgi transport.,similarity:Belongs to the ZW10 family.,subcellular location:Dynamic pattern of localization during the cell cycle. In most cells at interphase, present diffusely in the cytoplasm. In prometaphase, associated with the kinetochore. At metaphase, detected both at the kinetochores and, most prominently, at the spindle, particularly at the s
Subcellular Location :	Cytoplasm . Endoplasmic reticulum membrane ; Peripheral membrane protein . Chromosome, centromere, kinetochore . Cytoplasm, cytoskeleton, spindle . Lipid droplet . Dynamic pattern of localization during the cell cycle. In most cells at interphase, present diffusely in the cytoplasm (PubMed:15029241). In prometaphase, associated with the kinetochore. At metaphase, detected both at the kinetochores and, most prominently, at the spindle, particularly at the spindle poles. In very early anaphase, detected on segregating kinetochores. In late anaphase and telophase, accumulates at the spindle midzone (PubMed:11590237). .
Expression :	Widely expressed.
Sort :	24799
No4 :	1
Host :	Rabbit
Modifications :	Unmodified

Products Images



Western blot analysis of lysates from KB cells, primary antibody was diluted at 1:1000, 4° over night