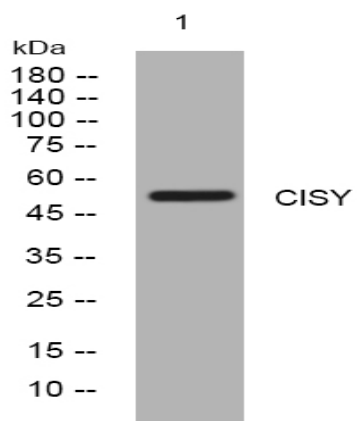


CISY rabbit pAb

Catalog No :	YT6966
Reactivity :	Human;Mouse;Rat
Applications :	WB
Target :	CISY
Fields :	>>Citrate cycle (TCA cycle);>>Glyoxylate and dicarboxylate metabolism;>>Metabolic pathways;>>Carbon metabolism;>>2-Oxocarboxylic acid metabolism;>>Biosynthesis of amino acids
Gene Name :	CS
Protein Name :	CISY
Human Gene Id :	1431
Human Swiss Prot No :	O75390
Mouse Gene Id :	12974
Mouse Swiss Prot No :	Q9CZU6
Rat Gene Id :	170587
Rat Swiss Prot No :	Q8VHF5
Immunogen :	Synthesized peptide derived from human CISY AA range: 272-322
Specificity :	This antibody detects endogenous levels of CISY at Human/Mouse/Rat
Formulation :	Liquid in PBS containing 50% glycerol, 0.5% BSA and 0.02% sodium azide.
Source :	Polyclonal, Rabbit,IgG
Dilution :	WB 1:500-2000

Purification :	The antibody was affinity-purified from rabbit antiserum by affinity-chromatography using epitope-specific immunogen.
Concentration :	1 mg/ml
Storage Stability :	-15°C to -25°C/1 year(Do not lower than -25°C)
Molecularweight :	51kD
Background :	The protein encoded by this gene is a Krebs tricarboxylic acid cycle enzyme that catalyzes the synthesis of citrate from oxaloacetate and acetyl coenzyme A. The enzyme is found in nearly all cells capable of oxidative metablism. This protein is nuclear encoded and transported into the mitochondrial matrix, where the mature form is found. [provided by RefSeq, Jul 2008],
Function :	catalytic activity:Acetyl-CoA + H(2)O + oxaloacetate = citrate + CoA.,miscellaneous:Citrate synthase is found in nearly all cells capable of oxidative metabolism.,online information:Citrate synthase entry,pathway:Carbohydrate metabolism; tricarboxylic acid cycle.,sequence caution:Intron retention.,similarity:Belongs to the citrate synthase family.,subunit:Homodimer.,
Subcellular Location :	Mitochondrion matrix.
Sort :	4002
No4 :	1
Host :	Rabbit
Modifications :	Unmodified

Products Images



Western blot analysis of lysates from SW480 cells, primary antibody was diluted at 1:1000, 4° over night