

OXA1L rabbit pAb

Catalog No :	YT6962
Reactivity :	Human;Mouse
Applications :	WB
Target :	OXA1L
Fields :	>>Protein export
Gene Name :	OXA1L
Protein Name :	OXA1L
Human Gene Id :	5018
Human Swiss Prot No :	Q15070
Mouse Gene Id :	69089
Mouse Swiss Prot No :	Q8BGA9
Immunogen :	Synthesized peptide derived from human OXA1L AA range: 53-103
Specificity :	This antibody detects endogenous levels of OXA1L at Human/Mouse
Formulation :	Liquid in PBS containing 50% glycerol, 0.5% BSA and 0.02% sodium azide.
Source :	Polyclonal, Rabbit,IgG
Dilution :	WB 1[?]500-2000
Purification :	The antibody was affinity-purified from rabbit antiserum by affinity-chromatography using epitope-specific immunogen.
Concentration :	1 mg/ml

Storage Stability : -15°C to -25°C/1 year(Do not lower than -25°C)

Molecularweight : 48kD

Background : This gene encodes an evolutionarily conserved protein that is localized to the inner mitochondrial membrane. The encoded protein is essential for the translocation of the N-terminal tail of subunit 2 of cytochrome c oxidase, and is involved in the assembly of the cytochrome c oxidase and ATPase complexes of the mitochondrial respiratory chain. [provided by RefSeq, Jul 2016],

Function : function:Required for the insertion of integral membrane proteins into the mitochondrial inner membrane. Essential for the activity and assembly of cytochrome oxidase.,similarity:Belongs to the OXA1/oxaA family.,

Subcellular Location : Mitochondrion inner membrane ; Multi-pass membrane protein .

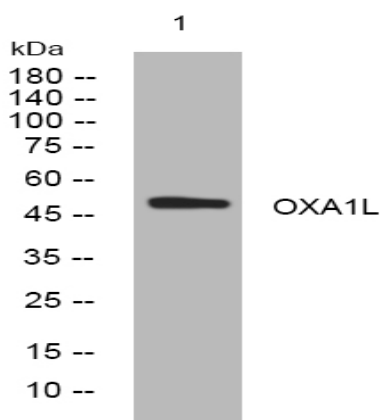
Sort : 11343

No4 : 1

Host : Rabbit

Modifications : Unmodified

Products Images



Western blot analysis of lysates from HpeG2 cells, primary antibody was diluted at 1:1000, 4° over night