

## CRBB1 rabbit pAb

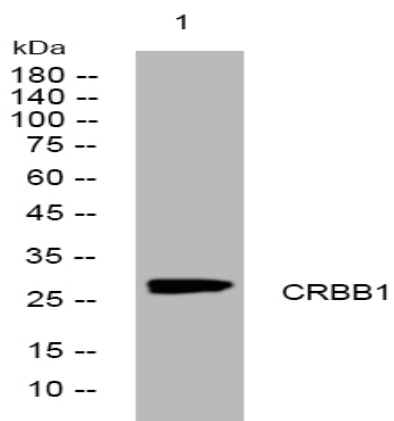
<b>Catalog No :</b>	YT6960
<b>Reactivity :</b>	Human;Mouse;Rat
<b>Applications :</b>	WB
<b>Target :</b>	CRBB1
<b>Gene Name :</b>	CRYBB1
<b>Protein Name :</b>	CRBB1
<b>Human Gene Id :</b>	1414
<b>Human Swiss Prot No :</b>	P53674
<b>Mouse Gene Id :</b>	12960
<b>Mouse Swiss Prot No :</b>	Q9WVJ5
<b>Rat Gene Id :</b>	25421
<b>Rat Swiss Prot No :</b>	P02523
<b>Immunogen :</b>	Synthesized peptide derived from human CRBB1 AA range: 81-131
<b>Specificity :</b>	This antibody detects endogenous levels of CRBB1 at Human/Mouse/Rat
<b>Formulation :</b>	Liquid in PBS containing 50% glycerol, 0.5% BSA and 0.02% sodium azide.
<b>Source :</b>	Polyclonal, Rabbit,IgG
<b>Dilution :</b>	WB 1:500-2000
<b>Purification :</b>	The antibody was affinity-purified from rabbit antiserum by affinity-chromatography using epitope-specific immunogen.

---

<b>Concentration :</b>	1 mg/ml
<b>Storage Stability :</b>	-15°C to -25°C/1 year(Do not lower than -25°C)
<b>Molecularweight :</b>	28kD
<b>Background :</b>	<p>Crystallins are separated into two classes: taxon-specific, or enzyme, and ubiquitous. The latter class constitutes the major proteins of vertebrate eye lens and maintains the transparency and refractive index of the lens. Since lens central fiber cells lose their nuclei during development, these crystallins are made and then retained throughout life, making them extremely stable proteins. Mammalian lens crystallins are divided into alpha, beta, and gamma families; beta and gamma crystallins are also considered as a superfamily. Alpha and beta families are further divided into acidic and basic groups. Seven protein regions exist in crystallins: four homologous motifs, a connecting peptide, and N- and C-terminal extensions. Beta-crystallins, the most heterogeneous, differ by the presence of the C-terminal extension (present in the basic group, none in the acidic group). Beta-crystallins form aggregates of different sizes and are able to self-associate to form dimers or to form heterodimers with other beta-crystallins. This gene, a beta basic group member, undergoes extensive cleavage at its N-terminal extension during lens maturation. It is also a member of a gene cluster with beta-A4, beta-B2, and beta-B3. [provided by RefSeq, Jul 2008],</p>
<b>Function :</b>	<p>disease:Defects in CRYBB1 are the cause of autosomal recessive congenital nuclear cataract type 3 (CATCN3) [MIM:611544]. CATCN3 is a form of non-syndromic congenital cataract. Non-syndromic congenital cataracts vary markedly in severity and morphology, affecting the nuclear, cortical, polar, or subcapsular parts of the lens or, in severe cases, the entire lens, with a variety of types of opacity. They are one of the major causes of vision loss in children worldwide and are responsible for approximately one third of blindness in infants. Congenital cataracts can lead to permanent blindness by interfering with the sharp focus of light on the retina during critical developmental intervals.,domain:Has a two-domain beta-structure, folded into four very similar Greek key motifs.,function:Crystallins are the dominant structural components of the vertebrate eye lens.,mass spectrometry: PubMed:86</p>
<b>Sort :</b>	4536
<b>No4 :</b>	1
<b>Host :</b>	Rabbit
<b>Modifications :</b>	Unmodified

---

**Products Images**



Western blot analysis of lysates from HCT116 cells, primary antibody was diluted at 1:1000, 4° over night