

LX15B rabbit pAb

Catalog No :	YT6959
Reactivity :	Human;Mouse;Rat
Applications :	WB
Target :	LX15B
Fields :	>>Arachidonic acid metabolism;>>Metabolic pathways;>>Serotonergic synapse
Gene Name :	ALOX15B
Protein Name :	LX15B
Human Gene Id :	247
Human Swiss Prot No :	O15296
Mouse Gene Id :	11688
Mouse Swiss Prot No :	O35936
Rat Gene Id :	266604
Rat Swiss Prot No :	Q8K4F2
Immunogen :	Synthesized peptide derived from human LX15B AA range: 576-626
Specificity :	This antibody detects endogenous levels of LX15B at Human/Mouse/Rat
Formulation :	Liquid in PBS containing 50% glycerol, 0.5% BSA and 0.02% sodium azide.
Source :	Polyclonal, Rabbit,IgG
Dilution :	WB 1[?]500-2000
Purification :	The antibody was affinity-purified from rabbit antiserum by affinity-

chromatography using epitope-specific immunogen.

Concentration : 1 mg/ml

Storage Stability : -15°C to -25°C/1 year(Do not lower than -25°C)

Molecularweight : 74kD

Background : This gene encodes a member of the lipoxygenase family of structurally related nonheme iron dioxygenases involved in the production of fatty acid hydroperoxides. The encoded protein converts arachidonic acid exclusively to 15S-hydroperoxyeicosatetraenoic acid, while metabolizing linoleic acid less effectively. This gene is located in a cluster of related genes and a pseudogene that spans approximately 100 kilobases on the short arm of chromosome 17. Alternatively spliced transcript variants encoding different isoforms have been described. [provided by RefSeq, Jul 2008],

Function : catalytic activity:Arachidonate + O(2) = (5Z,8Z,11Z,13E)-(15S)-15-hydroperoxyicoso-5,8,11,13-tetraenoate.,cofactor:Binds 1 iron ion per subunit.,function:Converts arachidonic acid exclusively to 15S-hydroperoxyeicosatetraenoic acid, while linoleic acid is less well metabolized.,pathway:Lipid metabolism; leukotriene D4 biosynthesis.,similarity:Belongs to the lipoxygenase family.,similarity:Contains 1 lipoxygenase domain.,similarity:Contains 1 PLAT domain.,tissue specificity:Expressed in hair, prostate, lung and cornea.,

Subcellular Location : [Isoform A]: Nucleus . Other isoforms are excluded from the nucleus. . ; Cytoplasm, cytosol . Cell membrane . Cytoplasm, cytoskeleton . Membrane ; Peripheral membrane protein . Cell junction, adherens junction . Cell junction, focal adhesion . Predominantly cytosolic; becomes enriched at membranes upon calcium binding. .

Expression : Expressed in hair, prostate, lung, ovary, lymph node, spinal cord and cornea.

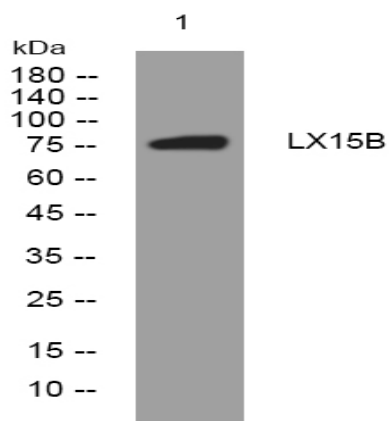
Sort : 9296

No4 : 1

Host : Rabbit

Modifications : Unmodified

Products Images



Western blot analysis of lysates from MCF-7 cells, primary antibody was diluted at 1:1000, 4° over night