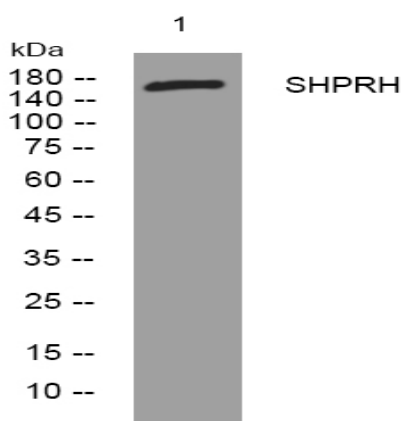


## SHPRH rabbit pAb

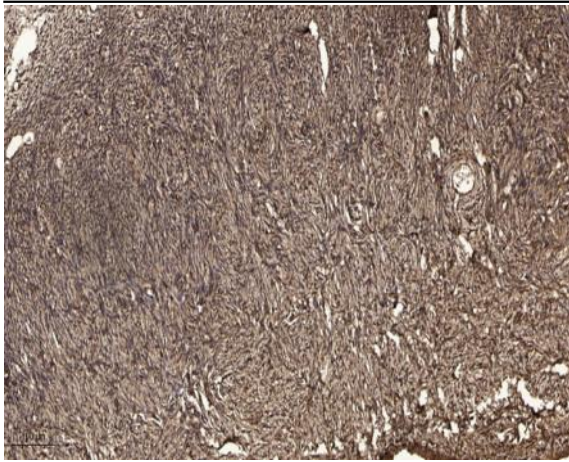
<b>Catalog No :</b>	YT6957
<b>Reactivity :</b>	Human;Mouse
<b>Applications :</b>	WB;IF;ELISA;IHC
<b>Target :</b>	SHPRH
<b>Gene Name :</b>	SHPRH KIAA2023
<b>Protein Name :</b>	SHPRH
<b>Human Gene Id :</b>	257218
<b>Human Swiss Prot No :</b>	Q149N8
<b>Mouse Gene Id :</b>	268281
<b>Mouse Swiss Prot No :</b>	Q7TPQ3
<b>Immunogen :</b>	Synthesized peptide derived from human SHPRH AA range: 9-59
<b>Specificity :</b>	This antibody detects endogenous levels of SHPRH at Human/Mouse
<b>Formulation :</b>	Liquid in PBS containing 50% glycerol, 0.5% BSA and 0.02% sodium azide.
<b>Source :</b>	Polyclonal, Rabbit,IgG
<b>Dilution :</b>	WB 1:500-2000; IF ICC 1:50-200;ELISA 1:2000-20000;IHC 1:50-200
<b>Purification :</b>	The antibody was affinity-purified from rabbit antiserum by affinity-chromatography using epitope-specific immunogen.
<b>Concentration :</b>	1 mg/ml
<b>Storage Stability :</b>	-15°C to -25°C/1 year(Do not lower than -25°C)

**Molecularweight :** 185kD**Background :** SHPRH is a ubiquitously expressed protein that contains motifs characteristics of several DNA repair proteins, transcription factors, and helicases. SHPRH is a functional homolog of *S. cerevisiae* RAD5 (Unk et al., 2006 [PubMed 17108083]).[supplied by OMIM, Mar 2008],**Function :** domain:The RING finger mediates E3 ubiquitin ligase activity.,function:E3 ubiquitin-protein ligase involved in DNA repair. Upon genotoxic stress, accepts ubiquitin from the UBE2N-UBE2V2 E2 complex and transfers it to 'Lys-164' of PCNA which had been monoubiquitinated by UBE2A/B-RAD18, promoting the formation of non-canonical poly-ubiquitin chains linked through 'Lys-63'.,pathway:Protein modification; protein ubiquitination.,similarity:Belongs to the SNF2/RAD54 helicase family.,similarity:Contains 1 helicase ATP-binding domain.,similarity:Contains 1 helicase C-terminal domain.,similarity:Contains 1 histone H1 domain.,similarity:Contains 1 PHD-type zinc finger.,similarity:Contains 1 RING-type zinc finger.,subunit:Homodimer. Interacts with PCNA, UBE2N and RAD18.,tissue specificity:Broadly expressed.,**Subcellular Location :** nucleosome,nucleus,**Expression :** Broadly expressed.**Sort :** 16315**No4 :** 1**Host :** Rabbit**Modifications :** Unmodified

## Products Images



Western blot analysis of lysates from MDA-MB cells, primary antibody was diluted at 1:1000, 4° over night



Immunohistochemical analysis of paraffin-embedded human oophoroma. 1, Antibody was diluted at 1:200(4° overnight). 2, Tris-EDTA,pH9.0 was used for antigen retrieval. 3,Secondary antibody was diluted at 1:200(room temperature, 45min).