

CMYA5 rabbit pAb

Catalog No :	YT6956
Reactivity :	Human;Mouse
Applications :	IHC;IF
Target :	CMYA5
Gene Name :	CMYA5 C5orf10 DTNBP2 SPRYD2 TRIM76
Protein Name :	CMYA5
Human Gene Id :	202333
Human Swiss Prot No :	Q8N3K9
Mouse Swiss Prot No :	Q70KF4
Immunogen :	Synthesized peptide derived from human CMYA5 AA range: 3866-3916
Specificity :	This antibody detects endogenous levels of CMYA5 at Human/Mouse
Formulation :	Liquid in PBS containing 50% glycerol, 0.5% BSA and 0.02% sodium azide.
Source :	Polyclonal, Rabbit,IgG
Dilution :	IHC 1:50-200. IF 1:50-200
Purification :	The antibody was affinity-purified from rabbit antiserum by affinity-chromatography using epitope-specific immunogen.
Concentration :	1 mg/ml
Storage Stability :	-15°C to -25°C/1 year(Do not lower than -25°C)
Molecularweight :	448kD

Function : domain:Amphipathic helix regions act as an anchoring domain for PKA, and appear to be responsible of the interaction between myospryn and PRKAR2A.,induction:Down-regulated in muscle cell lines derived from patients with Duchenne muscular dystrophy (DMD).,sequence caution:Contaminating sequence. Potential poly-A sequence.,sequence caution:Translated as Trp.,similarity:Contains 1 B30.2/SPRY domain.,similarity:Contains 2 fibronectin type-III domains.,subcellular location:Found predominantly at the periphery of the nucleus but also throughout the cell. Localized at the Z-line costamere connection level of the sarcolemma and in lysosomes.,subunit:Interacts with ACTN2, DTNBP1/dysbindin and PRKAR2A (By similarity). Interacts with DES.,tissue specificity:Expressed in skeletal muscle; at a strong level and in heart.,

Subcellular Location : Nucleus . Sarcoplasmic reticulum . Cytoplasm . Cytoplasm, perinuclear region . Cytoplasm, myofibril, sarcomere, M line . Found predominantly at the periphery of the nucleus but also throughout the cell. Localized in lysosomes (By similarity). In skeletal muscles, localizes along myofiber periphery, at costameres (By similarity). Predominantly flanks Z-disks (By similarity). Occasionally present at the M-band level. Colocalized with RYR2 in the sarcoplasmic reticulum (By similarity). .

Expression : Expressed in skeletal muscle; at a strong level and in heart.

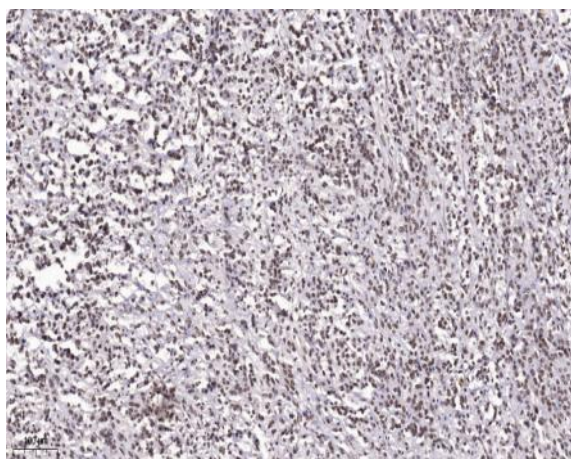
Sort : 4310

No4 : 1

Host : Rabbit

Modifications : Unmodified

Products Images



Immunohistochemical analysis of paraffin-embedded human Small intestinal stromal tumor. 1, Tris-EDTA,pH9.0 was used for antigen retrieval. 2 Antibody was diluted at 1:200(4° overnight).3,Secondary antibody was diluted at 1:200(room temperature, 45min).