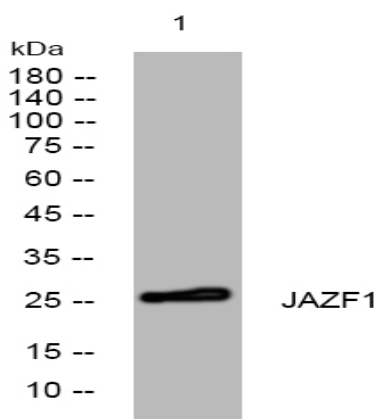


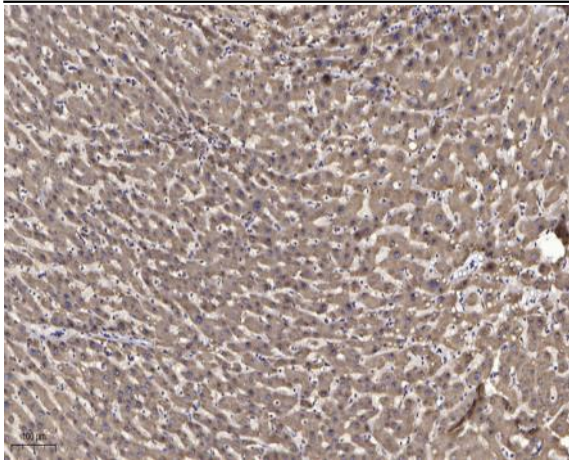
## JAZF1 rabbit pAb

<b>Catalog No :</b>	YT6951
<b>Reactivity :</b>	Human;Mouse
<b>Applications :</b>	WB;IHC
<b>Target :</b>	JAZF1
<b>Gene Name :</b>	JAZF1 TIP27 ZNF802
<b>Protein Name :</b>	JAZF1
<b>Human Gene Id :</b>	221895
<b>Human Swiss Prot No :</b>	Q86VZ6
<b>Mouse Gene Id :</b>	231986
<b>Mouse Swiss Prot No :</b>	Q80ZQ5
<b>Immunogen :</b>	Synthesized peptide derived from human JAZF1 AA range: 57-107
<b>Specificity :</b>	This antibody detects endogenous levels of JAZF1 at Human/Mouse
<b>Formulation :</b>	Liquid in PBS containing 50% glycerol, 0.5% BSA and 0.02% sodium azide.
<b>Source :</b>	Polyclonal, Rabbit,IgG
<b>Dilution :</b>	WB 1:500-2000;IHC 1:50-300
<b>Purification :</b>	The antibody was affinity-purified from rabbit antiserum by affinity-chromatography using epitope-specific immunogen.
<b>Concentration :</b>	1 mg/ml
<b>Storage Stability :</b>	-15°C to -25°C/1 year(Do not lower than -25°C)

**Molecularweight :** 27kD**Background :** This gene encodes a nuclear protein with three C2H2-type zinc fingers, and functions as a transcriptional repressor. Chromosomal aberrations involving this gene are associated with endometrial stromal tumors. Alternatively spliced variants which encode different protein isoforms have been described; however, not all variants have been fully characterized [provided by RefSeq, Jul 2008],**Function :** disease:A chromosomal aberration involving JAZF1 may be a cause of endometrial stromal tumors. Translocation t(7;17)(p15;q21) with SUZ12. The translocation generates the JAZF1-SUZ12 oncogene consisting of the N-terminus part of JAZF1 and the C-terminus part of SUZ12. It is frequently found in all cases of endometrial stromal tumors, except in endometrial stromal sarcomas, where it is rarer.,function:Potential transcription factor.,similarity:Contains 3 C2H2-type zinc fingers.,subunit:Interacts with TAK1.,**Subcellular Location :** Nucleus .**Expression :** Highest expression in testis with moderate levels in colon, placenta, prostate and ovary and low levels in brain, spleen, liver and small intestine.**Sort :** 8786**No4 :** 1**Host :** Rabbit**Modifications :** Unmodified

## Products Images





Immunohistochemical analysis of paraffin-embedded human liver cancer. 1, Antibody was diluted at 1:200(4° overnight). 2, Tris-EDTA,pH9.0 was used for antigen retrieval. 3,Secondary antibody was diluted at 1:200(room temperature, 45min).