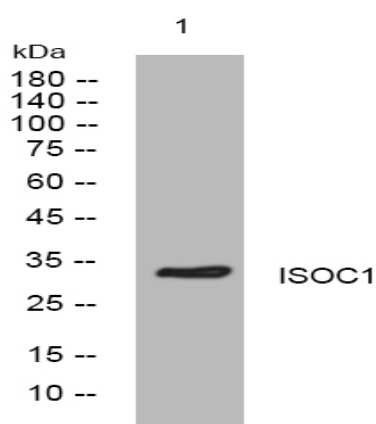


ISOC1 rabbit pAb

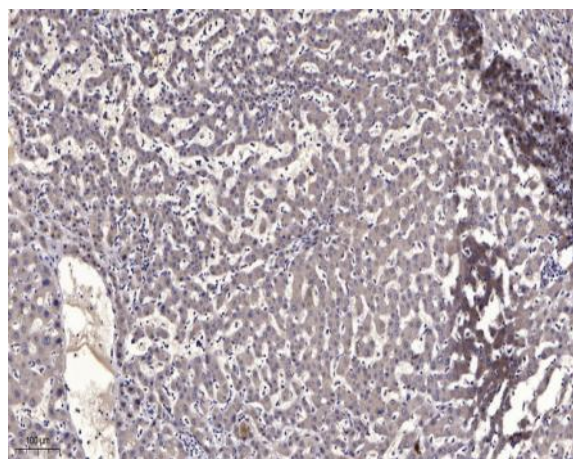
Catalog No :	YT6950
Reactivity :	Human;Mouse;Rat
Applications :	WB;ELISA;IHC
Target :	ISOC1
Gene Name :	ISOC1 CGI-111
Protein Name :	ISOC1
Human Gene Id :	51015
Human Swiss Prot No :	Q96CN7
Mouse Gene Id :	66307
Mouse Swiss Prot No :	Q91V64
Rat Gene Id :	364879
Rat Swiss Prot No :	Q6I7R3
Immunogen :	Synthesized peptide derived from human ISOC1 AA range: 193-243
Specificity :	This antibody detects endogenous levels of ISOC1 at Human/Mouse/Rat
Formulation :	Liquid in PBS containing 50% glycerol, 0.5% BSA and 0.02% sodium azide.
Source :	Polyclonal, Rabbit,IgG
Dilution :	WB 1:500-2000;IHC 1:50-300; ELISA 2000-20000
Purification :	The antibody was affinity-purified from rabbit antiserum by affinity-chromatography using epitope-specific immunogen.

Concentration :	1 mg/ml
Storage Stability :	-15°C to -25°C/1 year(Do not lower than -25°C)
Molecularweight :	33kD
Function :	similarity:Belongs to the isochorismatase family.,
Subcellular Location :	cytoplasm,peroxisome,extracellular exosome,
Sort :	8714
No4 :	1
Host :	Rabbit
Modifications :	Unmodified

Products Images



Western blot analysis of lysates from CACO2 cells, primary antibody was diluted at 1:1000, 4° over night



Immunohistochemical analysis of paraffin-embedded human liver cancer. 1, Antibody was diluted at 1:200(4° overnight). 2, Tris-EDTA,pH9.0 was used for antigen retrieval. 3,Secondary antibody was diluted at 1:200(room temperature, 45min).