

SYFA rabbit pAb

Catalog No :	YT6948
Reactivity :	Human;Mouse;Rat
Applications :	WB;ELISA;IHC
Target :	SYFA
Fields :	>>Aminoacyl-tRNA biosynthesis
Gene Name :	FARSA FARS FARSL FARSLA
Protein Name :	SYFA
Human Gene Id :	2193
Human Swiss Prot No :	Q9Y285
Mouse Gene Id :	66590
Mouse Swiss Prot No :	Q8C0C7
Rat Gene Id :	288917
Rat Swiss Prot No :	Q505J8
Immunogen :	Synthesized peptide derived from human SYFA AA range: 331-381
Specificity :	This antibody detects endogenous levels of SYFA at Human/Mouse/Rat
Formulation :	Liquid in PBS containing 50% glycerol, 0.5% BSA and 0.02% sodium azide.
Source :	Polyclonal, Rabbit,IgG
Dilution :	WB 1:500-2000;IHC 1:50-300; ELISA 2000-20000
Purification :	The antibody was affinity-purified from rabbit antiserum by affinity-

chromatography using epitope-specific immunogen.

Concentration : 1 mg/ml

Storage Stability : -15°C to -25°C/1 year(Do not lower than -25°C)

Molecularweight : 56kD

Background : Aminoacyl-tRNA synthetases are a class of enzymes that charge tRNAs with their cognate amino acids. This gene encodes a product which is similar to the catalytic subunit of prokaryotic and *Saccharomyces cerevisiae* phenylalanyl-tRNA synthetases (PheRS). This gene product has been shown to be expressed in a tumor-selective and cell cycle stage- and differentiation-dependent manner, the first member of the tRNA synthetase gene family shown to exhibit this type of regulated expression [provided by RefSeq, Jul 2008],

Function : catalytic activity:ATP + L-phenylalanine + tRNA(Phe) = AMP + diphosphate + L-phenylalanyl-tRNA(Phe).,similarity:Belongs to the class-II aminoacyl-tRNA synthetase family.,similarity:Belongs to the class-II aminoacyl-tRNA synthetase family. Phe-tRNA synthetase alpha chain type 2 subfamily.,subunit:Tetramer of two alpha and two beta chains.,

Subcellular Location : Cytoplasm .

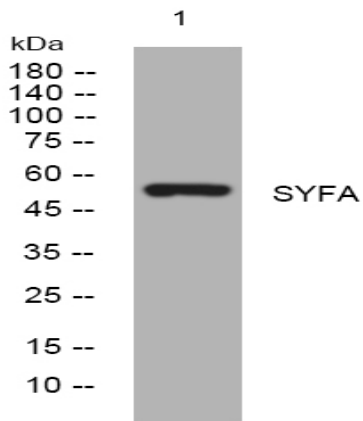
Sort : 16787

No4 : 1

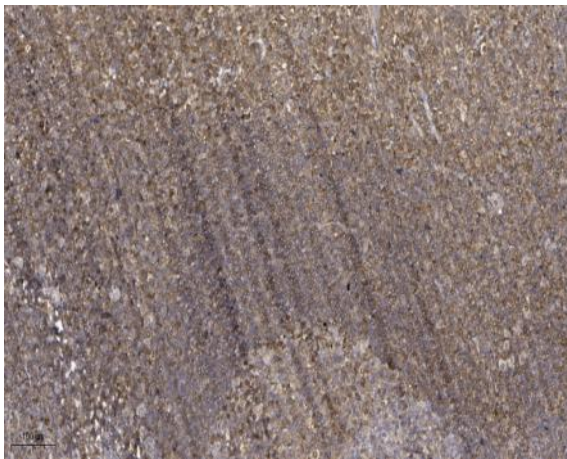
Host : Rabbit

Modifications : Unmodified

Products Images



Western blot analysis of lysates from CACO2 cells, primary antibody was diluted at 1:1000, 4° over night



Immunohistochemical analysis of paraffin-embedded human tonsil. 1, Antibody was diluted at 1:200(4° overnight). 2, Tris-EDTA,pH9.0 was used for antigen retrieval. 3,Secondary antibody was diluted at 1:200(room temperature, 45min).