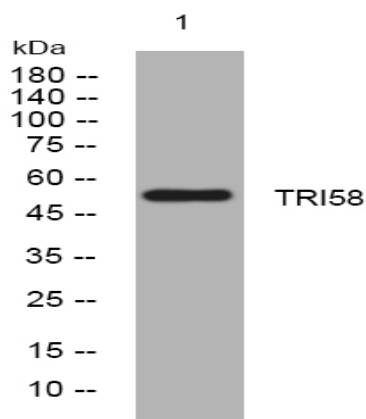


TRI58 rabbit pAb

Catalog No :	YT6944
Reactivity :	Human;Mouse
Applications :	WB
Target :	TRI58
Gene Name :	TRIM58
Protein Name :	TRI58
Human Gene Id :	25893
Human Swiss Prot No :	Q8NG06
Mouse Gene Id :	216781
Mouse Swiss Prot No :	Q5NCC9
Immunogen :	Synthesized peptide derived from human TRI58 AA range: 355-405
Specificity :	This antibody detects endogenous levels of TRI58 at Human/Mouse
Formulation :	Liquid in PBS containing 50% glycerol, 0.5% BSA and 0.02% sodium azide.
Source :	Polyclonal, Rabbit,IgG
Dilution :	WB 1[?]500-2000
Purification :	The antibody was affinity-purified from rabbit antiserum by affinity-chromatography using epitope-specific immunogen.
Concentration :	1 mg/ml
Storage Stability :	-15°C to -25°C/1 year(Do not lower than -25°C)

Molecularweight :	53kD
Function :	similarity:Belongs to the TRIM/RBCC family.,similarity:Contains 1 B box-type zinc finger.,similarity:Contains 1 B30.2/SPRY domain.,similarity:Contains 1 RING-type zinc finger.,
Subcellular Location :	intracellular,
Expression :	Expressed in erythroblasts.
Sort :	23535
No4 :	1
Host :	Rabbit
Modifications :	Unmodified

Products Images



Western blot analysis of lysates from SW480 cells, primary antibody was diluted at 1:1000, 4° over night