

CH048 rabbit pAb

Catalog No :	YT6942
Reactivity :	Human;Mouse
Applications :	WB
Target :	CH048
Gene Name :	C8orf48
Protein Name :	CH048
Human Gene Id :	157773
Human Swiss Prot No :	Q96LL4
Mouse Gene Id :	621080
Mouse Swiss Prot No :	Q3TTJ4
Immunogen :	Synthesized peptide derived from human CH048 AA range: 47-97
Specificity :	This antibody detects endogenous levels of CH048 at Human/Mouse
Formulation :	Liquid in PBS containing 50% glycerol, 0.5% BSA and 0.02% sodium azide.
Source :	Polyclonal, Rabbit,IgG
Dilution :	WB 1:500-2000
Purification :	The antibody was affinity-purified from rabbit antiserum by affinity-chromatography using epitope-specific immunogen.
Concentration :	1 mg/ml
Storage Stability :	-15°C to -25°C/1 year(Do not lower than -25°C)

Molecularweight : 35kD

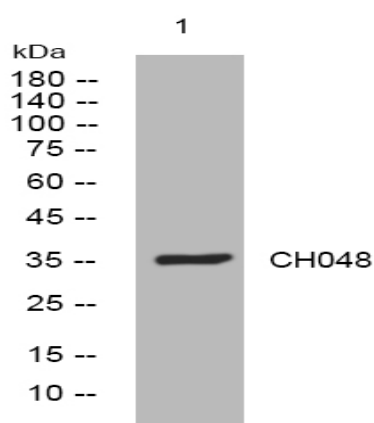
Sort : 3922

No4 : 1

Host : Rabbit

Modifications : Unmodified

Products Images



Western blot analysis of lysates from HeLa cells, primary antibody was diluted at 1:1000, 4° over night