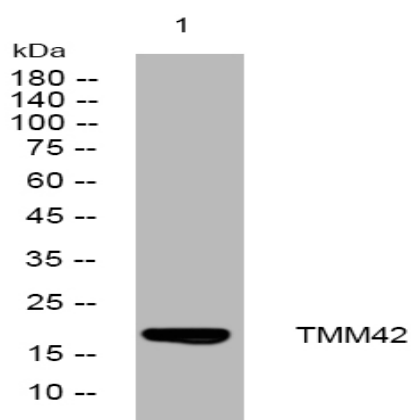


TMM42 rabbit pAb

Catalog No :	YT6941
Reactivity :	Human;Mouse
Applications :	WB
Target :	TMM42
Gene Name :	TMEM42
Protein Name :	TMM42
Human Gene Id :	131616
Human Swiss Prot No :	Q69YG0
Mouse Gene Id :	66079
Mouse Swiss Prot No :	Q9CR22
Immunogen :	Synthesized peptide derived from human TMM42 AA range: 71-121
Specificity :	This antibody detects endogenous levels of TMM42 at Human/Mouse
Formulation :	Liquid in PBS containing 50% glycerol, 0.5% BSA and 0.02% sodium azide.
Source :	Polyclonal, Rabbit,IgG
Dilution :	WB 1[?]500-2000
Purification :	The antibody was affinity-purified from rabbit antiserum by affinity-chromatography using epitope-specific immunogen.
Concentration :	1 mg/ml
Storage Stability :	-15°C to -25°C/1 year(Do not lower than -25°C)

Molecularweight :	17kD
Subcellular Location :	Membrane ; Multi-pass membrane protein .
Sort :	17238
No4 :	1
Host :	Rabbit
Modifications :	Unmodified

Products Images



Western blot analysis of lysates from A431 cells, primary antibody was diluted at 1:1000, 4° over night