

TX264 rabbit pAb

Catalog No :	YT6938
Reactivity :	Human;Mouse
Applications :	WB
Target :	TX264
Gene Name :	TEX264 ZSIG11 UNQ337/PRO536
Protein Name :	TX264
Human Gene Id :	51368
Human Swiss Prot No :	Q9Y6I9
Immunogen :	Synthesized peptide derived from human TX264 AA range: 112-162
Specificity :	This antibody detects endogenous levels of TX264 at Human
Formulation :	Liquid in PBS containing 50% glycerol, 0.5% BSA and 0.02% sodium azide.
Source :	Polyclonal, Rabbit,IgG
Dilution :	WB 1:500-2000
Purification :	The antibody was affinity-purified from rabbit antiserum by affinity-chromatography using epitope-specific immunogen.
Concentration :	1 mg/ml
Storage Stability :	-15°C to -25°C/1 year(Do not lower than -25°C)
Molecularweight :	34kD
Subcellular Location :	Endoplasmic reticulum membrane ; Single-pass type III membrane protein . Cytoplasmic vesicle, autophagosome . Cytoplasm, cytosol . Nucleus . Chromosome . Is trafficked from tubular ER to growing autophagosomes via its

cytosolic LIR motif (PubMed:31006537). Also found in the cytosol, nucleus and chromatin (PubMed:32152270). In response to formation of covalent DNA-protein cross-links (DPCs), localizes to the nuclear periphery, and associates with DNA replication forks (PubMed:32152270). .

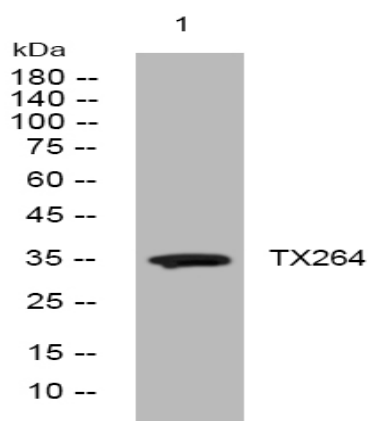
Sort : 23773

No4 : 1

Host : Rabbit

Modifications : Unmodified

Products Images



Western blot analysis of lysates from VEC cells, primary antibody was diluted at 1:1000, 4° over night