

## RU2A rabbit pAb

<b>Catalog No :</b>	YT6937
<b>Reactivity :</b>	Human;Mouse
<b>Applications :</b>	WB
<b>Target :</b>	RU2A
<b>Fields :</b>	>>Spliceosome
<b>Gene Name :</b>	SNRPA1
<b>Protein Name :</b>	RU2A
<b>Human Gene Id :</b>	6627
<b>Human Swiss Prot No :</b>	P09661
<b>Mouse Gene Id :</b>	68981
<b>Mouse Swiss Prot No :</b>	P57784
<b>Immunogen :</b>	Synthesized peptide derived from human RU2A AA range: 47-97
<b>Specificity :</b>	This antibody detects endogenous levels of RU2A at Human/Mouse
<b>Formulation :</b>	Liquid in PBS containing 50% glycerol, 0.5% BSA and 0.02% sodium azide.
<b>Source :</b>	Polyclonal, Rabbit,IgG
<b>Dilution :</b>	WB 1[?]500-2000
<b>Purification :</b>	The antibody was affinity-purified from rabbit antiserum by affinity-chromatography using epitope-specific immunogen.
<b>Concentration :</b>	1 mg/ml

**Storage Stability :** -15°C to -25°C/1 year(Do not lower than -25°C)

**Molecularweight :** 28kD

**Function :** function:This protein is associated with sn-RNP U2. It helps the A' protein to bind stem loop IV of U2 snRNA.,similarity:Belongs to the U2 small nuclear ribonucleoprotein A family.,similarity:Contains 3 LRR (leucine-rich) repeats.,subunit:Identified in the spliceosome C complex, at least composed of AQR, ASCC3L1, C19orf29, CDC40, CDC5L, CRNKL1, DDX23, DDX41, DDX48, DDX5, DGCR14, DHX35, DHX38, DHX8, EFTUD2, FRG1, GPATC1, HNRPA1, HNRPA2B1, HNRPA3, HNRPC, HNRPF, HNRPH1, HNRPK, HNRPM, HNRPR, HNRPU, KIAA1160, KIAA1604, LSM2, LSM3, MAGOH, MORG1, PABPC1, PLRG1, PNN, PPIE, PPIL1, PPIL3, PPWD1, PRPF19, PRPF4B, PRPF6, PRPF8, RALY, RBM22, RBM8A, RBMX, SART1, SF3A1, SF3A2, SF3A3, SF3B1, SF3B2, SF3B3, SFRS1, SKIV2L2, SNRPA1, SNRPB, SNRPB2, SNRPD1, SNRPD2, SNRPD3, SNRPE, SNRPF, SNRPG, SNW1, SRRM1, SRRM2, SYF2, SYNCRIP, TFIP11, THOC4, U2AF1, WDR57, XAB2 and ZCCHC8. Found in a pre-mRNA splicing complex

**Subcellular Location :** Nucleus .

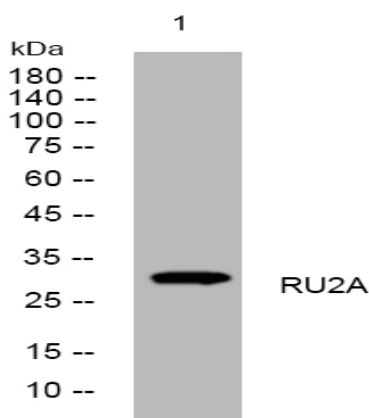
**Sort :** 14642

**No4 :** 1

**Host :** Rabbit

**Modifications :** Unmodified

## Products Images



Western blot analysis of lysates from CACO2 cells, primary antibody was diluted at 1:1000, 4° over night