

CLLU1 rabbit pAb

Catalog No :	YT6935
Reactivity :	Human
Applications :	WB
Target :	CLLU1
Gene Name :	CLLU1
Protein Name :	CLLU1
Human Gene Id :	574028
Human Swiss Prot No :	Q5K131
Immunogen :	Synthesized peptide derived from human CLLU1 AA range: 23-73
Specificity :	This antibody detects endogenous levels of CLLU1 at Human
Formulation :	Liquid in PBS containing 50% glycerol, 0.5% BSA and 0.02% sodium azide.
Source :	Polyclonal, Rabbit,IgG
Dilution :	WB 1:500-2000
Purification :	The antibody was affinity-purified from rabbit antiserum by affinity-chromatography using epitope-specific immunogen.
Concentration :	1 mg/ml
Storage Stability :	-15°C to -25°C/1 year(Do not lower than -25°C)
Molecularweight :	13kD
Background :	The protein encoded by this gene is overexpressed in chronic lymphocytic leukemia (CLL) and serves as a good prognostic marker for the disease. Methylation of certain genes, including this one, have been associated with CLL.

This gene is protein-coding in humans and non-protein coding in other primates. Three transcript variants, one protein-coding and the other two non-protein coding, have been found for this gene. [provided by RefSeq, Nov 2015],

Function :

disease:High CLLU1 expression in patients with CLL is associated with poor clinical outcome.,miscellaneous:Tridimensional modeling predicts that it may interact with the IL-4 receptor.,tissue specificity:Specifically expressed in chronic lymphocytic leukemia (CLL) cells from patients without immunoglobulin heavy-chain hypermutations.,

Subcellular Location :

Cytoplasm . Detected in the cytoplasm of chronic lymphocytic leukemia (CLL) cells.

Expression :

Specifically expressed in chronic lymphocytic leukemia (CLL) cells from patients without immunoglobulin heavy-chain hypermutations. Expression is detected in all CLL cells and levels are similar in patients before and after treatment.

Sort :

4291

No4 :

1

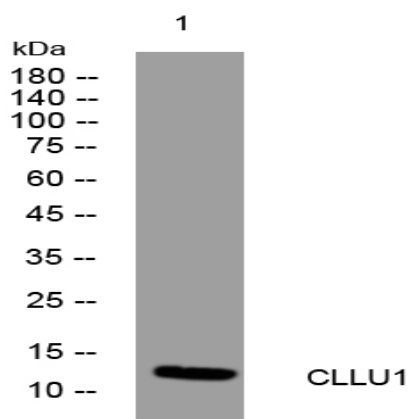
Host :

Rabbit

Modifications :

Unmodified

Products Images



Western blot analysis of lysates from 3T3 cells, primary antibody was diluted at 1:1000, 4° over night