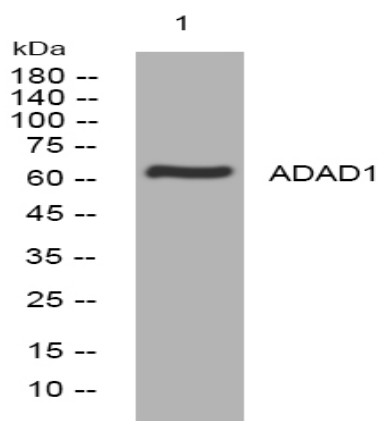


ADAD1 rabbit pAb

Catalog No :	YT6934
Reactivity :	Human;Mouse;Rat
Applications :	WB
Target :	ADAD1
Gene Name :	ADAD1 TENR
Protein Name :	ADAD1
Human Gene Id :	132612
Human Swiss Prot No :	Q96M93
Mouse Gene Id :	21744
Mouse Swiss Prot No :	Q5SUE7
Rat Gene Id :	294979
Rat Swiss Prot No :	Q3KR54
Immunogen :	Synthesized peptide derived from human ADAD1 AA range: 335-385
Specificity :	This antibody detects endogenous levels of ADAD1 at Human/Mouse/Rat
Formulation :	Liquid in PBS containing 50% glycerol, 0.5% BSA and 0.02% sodium azide.
Source :	Polyclonal, Rabbit,IgG
Dilution :	WB 1:500-2000
Purification :	The antibody was affinity-purified from rabbit antiserum by affinity-chromatography using epitope-specific immunogen.

Concentration :	1 mg/ml
Storage Stability :	-15°C to -25°C/1 year(Do not lower than -25°C)
Molecularweight :	63kD
Function :	function:Plays a role in spermatogenesis. Binds to RNA but not to DNA.,similarity:Belongs to the ADAD family.,similarity:Contains 1 A to I editase domain.,similarity:Contains 1 DRBM (double-stranded RNA-binding) domain.,
Subcellular Location :	Nucleus .
Sort :	1724
No4 :	1
Host :	Rabbit
Modifications :	Unmodified

Products Images



Western blot analysis of lysates from HeLa cells, primary antibody was diluted at 1:1000, 4° over night