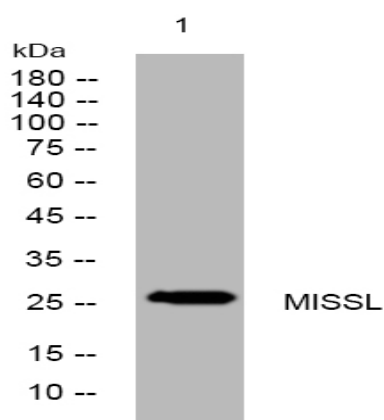


MISSL rabbit pAb

Catalog No :	YT6924
Reactivity :	Human;Mouse
Applications :	WB
Target :	MISSL
Gene Name :	MAPK1IP1L C14orf32
Protein Name :	MISSL
Human Gene Id :	93487
Human Swiss Prot No :	Q8NDC0
Mouse Gene Id :	218975
Mouse Swiss Prot No :	Q8BH93
Immunogen :	Synthesized peptide derived from human MISSL AA range: 150-200
Specificity :	This antibody detects endogenous levels of MISSL at Human/Mouse
Formulation :	Liquid in PBS containing 50% glycerol, 0.5% BSA and 0.02% sodium azide.
Source :	Polyclonal, Rabbit,IgG
Dilution :	WB 1:500-2000
Purification :	The antibody was affinity-purified from rabbit antiserum by affinity-chromatography using epitope-specific immunogen.
Concentration :	1 mg/ml
Storage Stability :	-15°C to -25°C/1 year(Do not lower than -25°C)

Molecularweight :	<u>27kD</u>
Function :	<u>similarity:Belongs to the MISS family.,</u>
Sort :	<u>9654</u>
No4 :	<u>1</u>
Host :	<u>Rabbit</u>
Modifications :	<u>Unmodified</u>

Products Images



Western blot analysis of lysates from HpeG2 cells, primary antibody was diluted at 1:1000, 4° over night