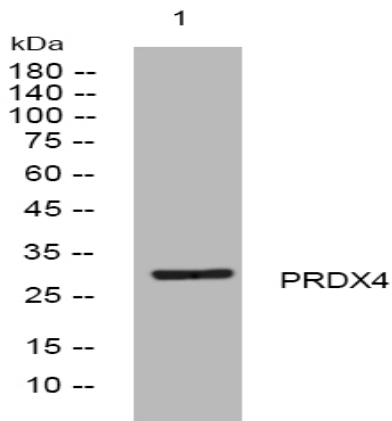


PRDX4 rabbit pAb

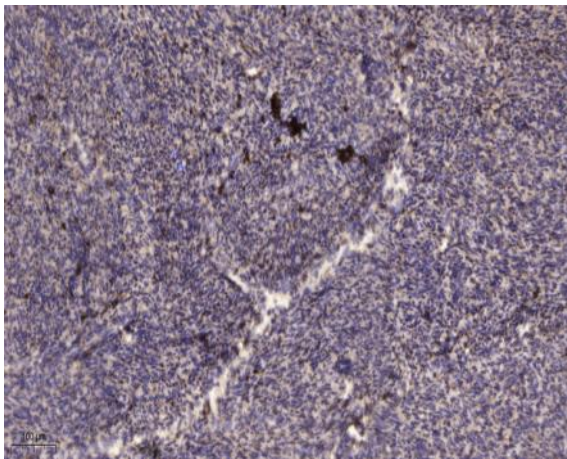
Catalog No :	YT6923
Reactivity :	Human;Mouse;Rat
Applications :	WB;ELISA;IHC
Target :	PRDX4
Gene Name :	PRDX4
Protein Name :	PRDX4
Human Gene Id :	10549
Human Swiss Prot No :	Q13162
Mouse Gene Id :	53381
Mouse Swiss Prot No :	O08807
Rat Gene Id :	85274
Rat Swiss Prot No :	Q9Z0V5
Immunogen :	Synthesized peptide derived from human PRDX4 AA range: 112-162
Specificity :	This antibody detects endogenous levels of PRDX4 at Human/Mouse/Rat
Formulation :	Liquid in PBS containing 50% glycerol, 0.5% BSA and 0.02% sodium azide.
Source :	Polyclonal, Rabbit,IgG
Dilution :	WB 1:500-2000;IHC 1:50-300; ELISA 2000-20000
Purification :	The antibody was affinity-purified from rabbit antiserum by affinity-chromatography using epitope-specific immunogen.

Concentration :	1 mg/ml
Storage Stability :	-15°C to -25°C/1 year(Do not lower than -25°C)
Molecularweight :	30kD
Background :	<p>The protein encoded by this gene is an antioxidant enzyme and belongs to the peroxiredoxin family. The protein is localized to the cytoplasm. Peroxidases of the peroxiredoxin family reduce hydrogen peroxide and alkyl hydroperoxides to water and alcohol with the use of reducing equivalents derived from thiol-containing donor molecules. This protein has been found to play a regulatory role in the activation of the transcription factor NF-kappaB. [provided by RefSeq, Jul 2008],</p>
Function :	<p>catalytic activity:2 R'-SH + ROOH = R'-S-S-R' + H(2)O + ROH.,function:Probably involved in redox regulation of the cell. Regulates the activation of NF-kappa-B in the cytosol by a modulation of I-kappa-B-alpha phosphorylation.,miscellaneous:Irreversibly inactivated by overoxidation of Cys-124 (to Cys-SO(3)H) upon oxidative stress.,miscellaneous:The active site is the redox-active Cys-124 oxidized to Cys-SOH. Cys-SOH rapidly reacts with Cys-245-SH of the other subunit to form an intermolecular disulfide with a concomitant homodimer formation. The enzyme may be subsequently regenerated by reduction of the disulfide by thioredoxin.,similarity:Belongs to the ahpC/TSA family.,similarity:Contains 1 thioredoxin domain.,subunit:Homodimer or heterodimer with PRDX1; disulfide-linked, upon oxidation.,</p>
Subcellular Location :	<p>Cytoplasm . Endoplasmic reticulum . Cotranslationally translocated to and retained within the endoplasmic reticulum. A small fraction of the protein is cytoplasmic. .</p>
Sort :	13002
No4 :	1
Host :	Rabbit
Modifications :	Unmodified

Products Images



Western blot analysis of lysates from Hela cells, primary antibody was diluted at 1:1000, 4° over night



Immunohistochemical analysis of paraffin-embedded human uterus. 1, Antibody was diluted at 1:200(4° overnight). 2, Tris-EDTA,pH9.0 was used for antigen retrieval. 3,Secondary antibody was diluted at 1:200(room temperature, 45min).