

## FIBP rabbit pAb

<b>Catalog No :</b>	YT6922
<b>Reactivity :</b>	Human;Mouse
<b>Applications :</b>	WB
<b>Target :</b>	FIBP
<b>Gene Name :</b>	FIBP
<b>Protein Name :</b>	FIBP
<b>Human Gene Id :</b>	9158
<b>Human Swiss Prot No :</b>	O43427
<b>Mouse Gene Id :</b>	58249
<b>Mouse Swiss Prot No :</b>	Q9JI19
<b>Immunogen :</b>	Synthesized peptide derived from human FIBP AA range: 104-154
<b>Specificity :</b>	This antibody detects endogenous levels of FIBP at Human/Mouse
<b>Formulation :</b>	Liquid in PBS containing 50% glycerol, 0.5% BSA and 0.02% sodium azide.
<b>Source :</b>	Polyclonal, Rabbit,IgG
<b>Dilution :</b>	WB 1:500-2000
<b>Purification :</b>	The antibody was affinity-purified from rabbit antiserum by affinity-chromatography using epitope-specific immunogen.
<b>Concentration :</b>	1 mg/ml
<b>Storage Stability :</b>	-15°C to -25°C/1 year(Do not lower than -25°C)

**Molecularweight :** 40kD

**Background :** Acidic fibroblast growth factor is mitogenic for a variety of different cell types and acts by stimulating mitogenesis or inducing morphological changes and differentiation. The FIBP protein is an intracellular protein that binds selectively to acidic fibroblast growth factor (aFGF). It is postulated that FIBP may be involved in the mitogenic action of aFGF. Two transcript variants encoding different isoforms have been found for this gene. [provided by RefSeq, Jul 2008],

**Function :** function:May be involved in mitogenic function of FGF1.,subcellular location:Also associated with cytoplasmic membranes, particularly of mitochondria.,subunit:Binds to internalized FGF1.,tissue specificity:Highly expressed in heart, skeletal muscle and pancreas. Expressed at lower levels in brain. Also found in placenta, liver and kidney.,

**Subcellular Location :** Nucleus. Endomembrane system; Peripheral membrane protein. Also associated with cytoplasmic membranes, particularly of mitochondria.

**Expression :** Highly expressed in heart, skeletal muscle and pancreas. Expressed at lower levels in brain. Also found in placenta, liver and kidney.

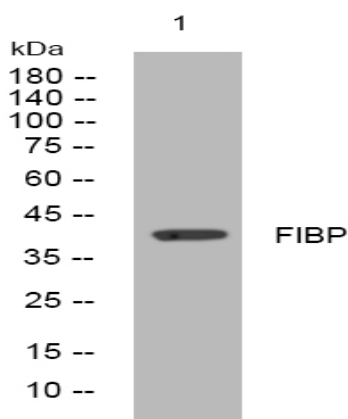
**Sort :** 6047

**No4 :** 1

**Host :** Rabbit

**Modifications :** Unmodified

## Products Images



Western blot analysis of lysates from HeLa cells, primary antibody was diluted at 1:1000, 4° over night