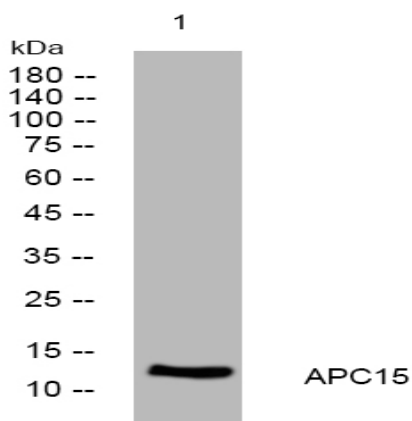


APC15 rabbit pAb

Catalog No :	YT6918
Reactivity :	Human;Mouse;Rat
Applications :	WB
Target :	APC15
Fields :	>>Cell cycle;>>Oocyte meiosis;>>Ubiquitin mediated proteolysis;>>Progesterone-mediated oocyte maturation;>>Human T-cell leukemia virus 1 infection
Gene Name :	ANAPC15 C11orf51 HSPC020
Protein Name :	APC15
Human Gene Id :	25906
Human Swiss Prot No :	P60006
Mouse Gene Id :	75430
Mouse Swiss Prot No :	P60007
Rat Gene Id :	293155
Rat Swiss Prot No :	D3ZQX4
Immunogen :	Synthesized peptide derived from human APC15 AA range: 6-56
Specificity :	This antibody detects endogenous levels of APC15 at Human/Mouse/Rat
Formulation :	Liquid in PBS containing 50% glycerol, 0.5% BSA and 0.02% sodium azide.
Source :	Polyclonal, Rabbit,IgG
Dilution :	WB 1:500-2000

Purification :	The antibody was affinity-purified from rabbit antiserum by affinity-chromatography using epitope-specific immunogen.
Concentration :	1 mg/ml
Storage Stability :	-15°C to -25°C/1 year(Do not lower than -25°C)
Molecularweight :	13kD
Subcellular Location :	intracellular,nucleoplasm,anaphase-promoting complex,cytosol,
Sort :	2124
No4 :	1
Host :	Rabbit
Modifications :	Unmodified

Products Images



Western blot analysis of lysates from Jurkat cells, primary antibody was diluted at 1:1000, 4° over night