

SC6A9 rabbit pAb

Catalog No :	YT6914
Reactivity :	Human;Mouse;Rat
Applications :	WB;ELISA;IHC
Target :	SC6A9
Fields :	>>Synaptic vesicle cycle
Gene Name :	SLC6A9
Protein Name :	SC6A9
Human Gene Id :	6536
Human Swiss Prot No :	P48067
Mouse Gene Id :	14664
Mouse Swiss Prot No :	P28571
Rat Gene Id :	116509
Rat Swiss Prot No :	P28572
Immunogen :	Synthesized peptide derived from human SC6A9 AA range: 101-151
Specificity :	This antibody detects endogenous levels of SC6A9 at Human/Mouse/Rat
Formulation :	Liquid in PBS containing 50% glycerol, 0.5% BSA and 0.02% sodium azide.
Source :	Polyclonal, Rabbit,IgG
Dilution :	WB 1:500-2000;IHC 1:50-300; ELISA 2000-20000
Purification :	The antibody was affinity-purified from rabbit antiserum by affinity-

chromatography using epitope-specific immunogen.

Concentration : 1 mg/ml

Storage Stability : -15°C to -25°C/1 year(Do not lower than -25°C)

Molecularweight : 78kD

Background : The amino acid glycine acts as an inhibitory neurotransmitter in the central nervous system. The protein encoded by this gene is one of two transporters that stop glycine signaling by removing it from the synaptic cleft. [provided by RefSeq, Jun 2016],

Function : function:Terminates the action of glycine by its high affinity sodium-dependent reuptake into presynaptic terminals. May play a role in regulation of glycine levels in NMDA receptor-mediated neurotransmission.,similarity:Belongs to the sodium:neurotransmitter symporter (SNF) family.,tissue specificity:All GLYT-1 subtypes can be found in brain, kidney, pancreas, lung, placenta, liver. But GLYT-1C subtype is only found in the brain.,

Subcellular Location : Membrane; Multi-pass membrane protein.

Expression : Isoform GlyT-1A and isoform GlyT-1B can be found in brain, kidney, pancreas, lung, placenta and liver but isoform GlyT-1C is only found in brain.

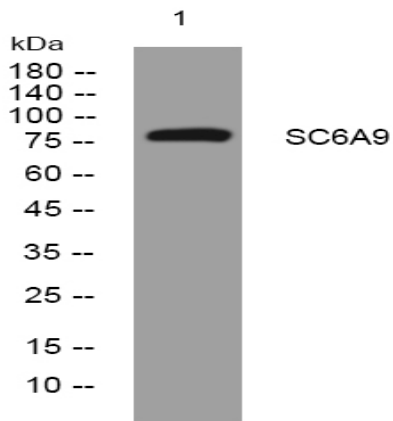
Sort : 16167

No4 : 1

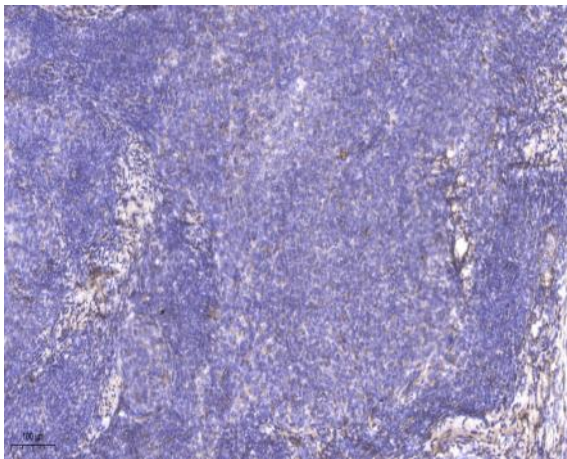
Host : Rabbit

Modifications : Unmodified

Products Images



Western blot analysis of lysates from SH-SY5Y cells, primary antibody was diluted at 1:1000, 4° over night



Immunohistochemical analysis of paraffin-embedded human cervical carcinoma. 1, Antibody was diluted at 1:200(4° overnight). 2, Tris-EDTA, pH9.0 was used for antigen retrieval. 3, Secondary antibody was diluted at 1:200(room temperature, 45min).