

## CK016 rabbit pAb

<b>Catalog No :</b>	YT6912
<b>Reactivity :</b>	Human;Mouse
<b>Applications :</b>	WB
<b>Target :</b>	CK016
<b>Gene Name :</b>	C11orf16
<b>Protein Name :</b>	CK016
<b>Human Gene Id :</b>	56673
<b>Human Swiss Prot No :</b>	Q9NQ32
<b>Mouse Gene Id :</b>	57355
<b>Mouse Swiss Prot No :</b>	Q9JJR6
<b>Immunogen :</b>	Synthesized peptide derived from human CK016 AA range: 166-216
<b>Specificity :</b>	This antibody detects endogenous levels of CK016 at Human/Mouse
<b>Formulation :</b>	Liquid in PBS containing 50% glycerol, 0.5% BSA and 0.02% sodium azide.
<b>Source :</b>	Polyclonal, Rabbit,IgG
<b>Dilution :</b>	WB 1:500-2000
<b>Purification :</b>	The antibody was affinity-purified from rabbit antiserum by affinity-chromatography using epitope-specific immunogen.
<b>Concentration :</b>	1 mg/ml
<b>Storage Stability :</b>	-15°C to -25°C/1 year(Do not lower than -25°C)

---

**Molecularweight :** 51kD

---

**Sort :** 4020

---

**No4 :** 1

---

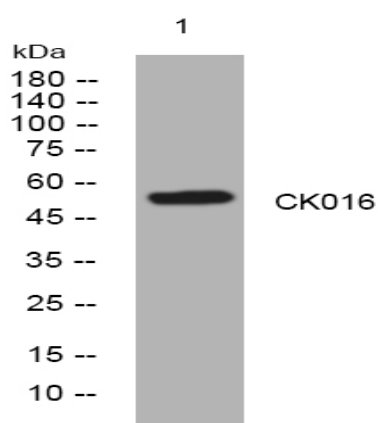
**Host :** Rabbit

---

**Modifications :** Unmodified

---

## Products Images



Western blot analysis of lysates from HuvEc cells, primary antibody was diluted at 1:1000, 4° over night