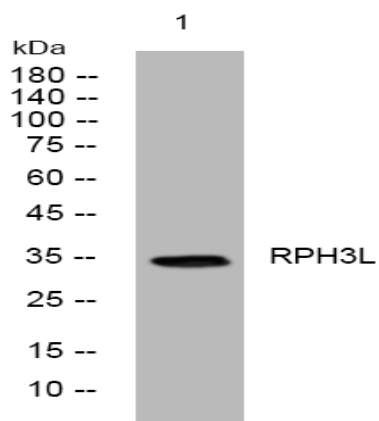


RPH3L rabbit pAb

Catalog No :	YT6911
Reactivity :	Human;Mouse;Rat
Applications :	WB
Target :	RPH3L
Gene Name :	RPH3AL NOC2
Protein Name :	RPH3L
Human Gene Id :	9501
Human Swiss Prot No :	Q9UNE2
Mouse Gene Id :	380714
Mouse Swiss Prot No :	Q768S4
Rat Gene Id :	171123
Rat Swiss Prot No :	O54880
Immunogen :	Synthesized peptide derived from human RPH3L AA range: 162-212
Specificity :	This antibody detects endogenous levels of RPH3L at Human/Mouse/Rat
Formulation :	Liquid in PBS containing 50% glycerol, 0.5% BSA and 0.02% sodium azide.
Source :	Polyclonal, Rabbit,IgG
Dilution :	WB 1:500-2000
Purification :	The antibody was affinity-purified from rabbit antiserum by affinity-chromatography using epitope-specific immunogen.

Concentration :	1 mg/ml
Storage Stability :	-15°C to -25°C/1 year(Do not lower than -25°C)
Molecularweight :	35kD
Background :	The protein encoded by this gene plays a direct regulatory role in calcium-ion-dependent exocytosis in both endocrine and exocrine cells and plays a key role in insulin secretion by pancreatic cells. This gene is likely a tumor suppressor. Alternative splicing results in multiple transcript variants encoding distinct isoforms. [provided by RefSeq, Jun 2010],
Function :	domain:The N-terminus of the RabBD domain is necessary and sufficient for interaction with RAB27A.,function:Rab GTPase effector involved in the late steps of regulated exocytosis, both in endocrine and exocrine cells (By similarity). Acts as a potential RAB3B effector protein in epithelial cells.,similarity:Contains 1 FYVE-type zinc finger.,similarity:Contains 1 RabBD (Rab-binding) domain.,subcellular location:Recruited to the vesicle membrane in a GTP- and RAB3B-dependent manner in epithelial cells.,subunit:Recruited to dense-core vesicles through specific interaction with RAB27A in endocrine cells. Interacts with RAB3A, RAB3B, RAB3C and RAB3D. Interacts with ZYX.,tissue specificity:Moderate to high levels of expression in thyroid, ovary, stomach, heart, pancreas, skeletal muscle, kidney and liver. Also detected in epithelial cells.,
Subcellular Location :	Cytoplasm . Cytoplasmic vesicle, secretory vesicle membrane . Recruited to the vesicle membrane in a GTP- and RAB3B-dependent manner in epithelial cells.
Expression :	Moderate to high levels of expression in thyroid, ovary, stomach, heart, pancreas, skeletal muscle, kidney and liver. Also detected in epithelial cells.
Sort :	14603
No4 :	1
Host :	Rabbit
Modifications :	Unmodified

Products Images



Western blot analysis of lysates from SW480 cells, primary antibody was diluted at 1:1000, 4° over night