

PRR24 rabbit pAb

Catalog No :	YT6908
Reactivity :	Human
Applications :	WB;IF;ELISA;IHC
Target :	PRR24
Gene Name :	PRR24
Protein Name :	PRR24
Human Gene Id :	255783
Human Swiss Prot No :	C9JVV0
Immunogen :	Synthesized peptide derived from human PRR24 AA range: 92-142
Specificity :	This antibody detects endogenous levels of PRR24 at Human
Formulation :	Liquid in PBS containing 50% glycerol, 0.5% BSA and 0.02% sodium azide.
Source :	Polyclonal, Rabbit,IgG
Dilution :	WB 1:500-2000; IF ICC 1:50-200;ELISA 1:2000-20000;IHC 1:50-200
Purification :	The antibody was affinity-purified from rabbit antiserum by affinity-chromatography using epitope-specific immunogen.
Concentration :	1 mg/ml
Storage Stability :	-15°C to -25°C/1 year(Do not lower than -25°C)
Molecularweight :	16kD
Subcellular Location :	Membrane ; Single-pass membrane protein .

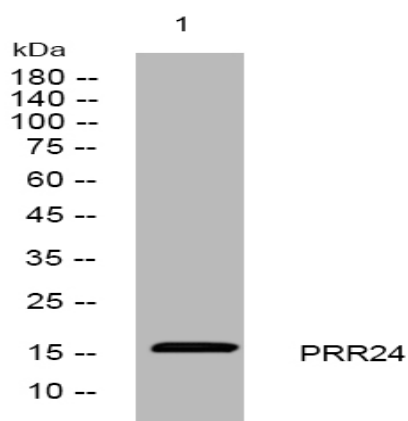
Sort : 13085

No4 : 1

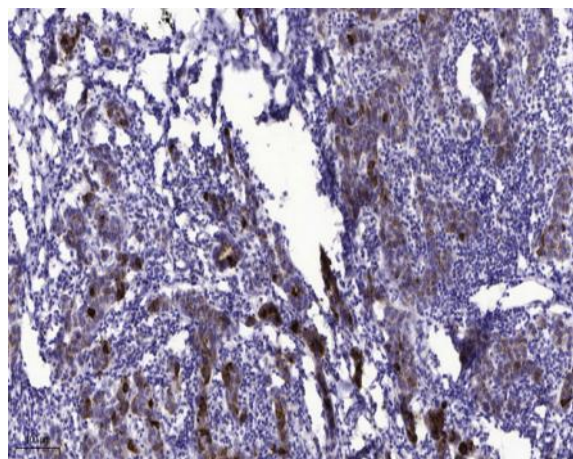
Host : Rabbit

Modifications : Unmodified

Products Images



Western blot analysis of lysates from SW480 cells, primary antibody was diluted at 1:1000, 4° over night



Immunohistochemical analysis of paraffin-embedded human Breast cancer. 1, Antibody was diluted at 1:200(4° overnight). 2, Tris-EDTA,pH9.0 was used for antigen retrieval. 3,Secondary antibody was diluted at 1:200(room temperature, 45min).