

## NKD2 rabbit pAb

<b>Catalog No :</b>	YT6904
<b>Reactivity :</b>	Human;Mouse
<b>Applications :</b>	WB
<b>Target :</b>	NKD2
<b>Fields :</b>	>>Wnt signaling pathway;>>Hippo signaling pathway
<b>Gene Name :</b>	NKD2
<b>Protein Name :</b>	NKD2
<b>Human Gene Id :</b>	85409
<b>Human Swiss Prot No :</b>	Q969F2
<b>Mouse Gene Id :</b>	72293
<b>Mouse Swiss Prot No :</b>	Q8VE28
<b>Immunogen :</b>	Synthesized peptide derived from human NKD2 AA range: 311-361
<b>Specificity :</b>	This antibody detects endogenous levels of NKD2 at Human/Mouse
<b>Formulation :</b>	Liquid in PBS containing 50% glycerol, 0.5% BSA and 0.02% sodium azide.
<b>Source :</b>	Polyclonal, Rabbit,IgG
<b>Dilution :</b>	WB 1[?]500-2000
<b>Purification :</b>	The antibody was affinity-purified from rabbit antiserum by affinity-chromatography using epitope-specific immunogen.
<b>Concentration :</b>	1 mg/ml

**Storage Stability :** -15°C to -25°C/1 year (Do not lower than -25°C)

**Molecularweight :** 50kD

**Background :** This gene encodes a member of a family of proteins that function as negative regulators of Wnt receptor signaling through interaction with Dishevelled family members. The encoded protein participates in the delivery of transforming growth factor alpha-containing vesicles to the cell membrane. Alternatively spliced transcript variants encoding multiple isoforms have been observed for this gene. [provided by RefSeq, Aug 2012],

**Function :** developmental stage: Expressed in fetal kidney and lung., function: Cell autonomous antagonist of the canonical Wnt signaling pathway. May activate a second Wnt signaling pathway that controls planar cell polarity (By similarity). Required for processing of TGFA and for targeting of TGFA to the basolateral membrane of polarized epithelial cells., similarity: Belongs to the NKD family., similarity: Contains 1 EF-hand domain., subunit: Interacts with DVL1, DVL2, DVL3 and PPP2R3A (By similarity). Interacts with TGFA., tissue specificity: Expressed in kidney, lung, pancreas and spleen.,

**Subcellular Location :** Cell membrane . Cytoplasm . Cytoplasmic vesicle .

**Expression :** Expressed in kidney, lung, pancreas and spleen.

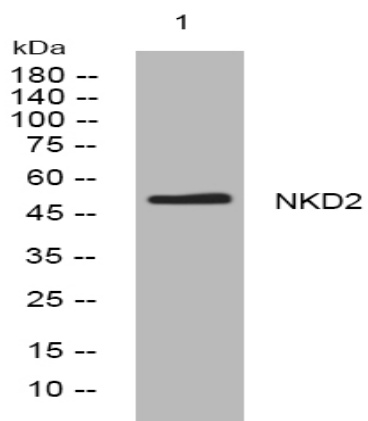
**Sort :** 10864

**No4 :** 1

**Host :** Rabbit

**Modifications :** Unmodified

## Products Images



Western blot analysis of lysates from SW480 cells, primary antibody was diluted at 1:1000, 4° over night