

**p40 rabbit mAb(ABT37R)**

<b>Catalog No :</b>	YM7280
<b>Reactivity :</b>	Human
<b>Applications :</b>	IHC;IF;ELISA
<b>Target :</b>	p40/p63
<b>Fields :</b>	>>MicroRNAs in cancer
<b>Gene Name :</b>	TP63 KET P63 P73H P73L TP73L
<b>Protein Name :</b>	p40
<b>Human Gene Id :</b>	3662
<b>Human Swiss Prot No :</b>	Q9H3D4
<b>Immunogen :</b>	Synthesized peptide derived from human p40
<b>Specificity :</b>	This antibody detects endogenous levels of p40 at Human
<b>Formulation :</b>	Liquid in PBS containing 50% glycerol, 0.5% BSA and 0.02% sodium azide.
<b>Source :</b>	Monoclonal, Rabbit,IgG
<b>Dilution :</b>	IHC 1:50-1:200. IF 1:50-200, ELISA 1:5000-20000
<b>Purification :</b>	The antibody was affinity-purified from Cell supernatant by affinity-chromatography using specific immunogen.
<b>Storage Stability :</b>	-15°C to -25°C/1 year(Do not lower than -25°C)
<b>Function :</b>	cofactor: Binds 1 zinc ion per subunit., disease: Defects in TP63 are a cause of cervical, colon, head and neck, lung and ovarian cancers., disease: Defects in TP63 are a cause of ectodermal dysplasia Rapp-Hodgkin type (EDRH) [MIM:129400]; also called Rapp-Hodgkin syndrome or anhidrotic ectodermal dysplasia with cleft lip/palate. Ectodermal dysplasia defines a heterogeneous

group of disorders due to abnormal development of two or more ectodermal structures. EDRH is characterized by the combination of anhidrotic ectodermal dysplasia, cleft lip, and cleft palate. The clinical syndrome is comprised of a characteristic facies (narrow nose and small mouth), wiry, slow-growing, and uncombable hair, sparse eyelashes and eyebrows, obstructed lacrimal puncta/epiphora, bilateral stenosis of external auditory canals, microsomia, hypodontia, cone-shaped incisors, enamel hypoplasia, dystrophic nails, and

**Subcellular****Location :**

Nucleus .

**Expression :**

Widely expressed, notably in heart, kidney, placenta, prostate, skeletal muscle, testis and thymus, although the precise isoform varies according to tissue type. Progenitor cell layers of skin, breast, eye and prostate express high levels of DeltaN-type isoforms. Isoform 10 is predominantly expressed in skin squamous cell carcinomas, but not in normal skin tissues.

**Tag :**

recombinant

**Sort :**

252

**No4 :**

1

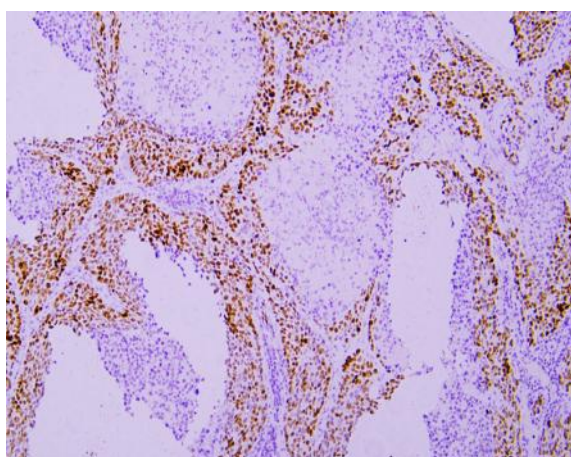
**Host :**

Rabbit

**Modifications :**

Unmodified

## Products Images



Immunohistochemical analysis of paraffin-embedded human Lung squamous cell carcinoma. 1, Antibody was incubated at 4° overnight. 2, Citrate buffer of pH6.0 was used for antigen retrieval. 3, Secondary antibody was diluted at 1:200(room temperature, 30min).