

## IMA8 rabbit pAb

<b>Catalog No :</b>	YT6900
<b>Reactivity :</b>	Human;Mouse
<b>Applications :</b>	WB
<b>Target :</b>	IMA8
<b>Fields :</b>	>>Nucleocytoplasmic transport;>>Influenza A;>>Chemical carcinogenesis - receptor activation
<b>Gene Name :</b>	KPNA7
<b>Protein Name :</b>	IMA8
<b>Human Gene Id :</b>	402569
<b>Human Swiss Prot No :</b>	A9QM74
<b>Mouse Gene Id :</b>	381686
<b>Mouse Swiss Prot No :</b>	C0LLJ0
<b>Immunogen :</b>	Synthesized peptide derived from human IMA8 AA range: 313-363
<b>Specificity :</b>	This antibody detects endogenous levels of IMA8 at Human/Mouse
<b>Formulation :</b>	Liquid in PBS containing 50% glycerol, 0.5% BSA and 0.02% sodium azide.
<b>Source :</b>	Polyclonal, Rabbit,IgG
<b>Dilution :</b>	WB 1[?]500-2000
<b>Purification :</b>	The antibody was affinity-purified from rabbit antiserum by affinity-chromatography using epitope-specific immunogen.
<b>Concentration :</b>	1 mg/ml

**Storage Stability :** -15°C to -25°C/1 year(Do not lower than -25°C)

**Molecularweight :** 57kD

**Background :** The transport of molecules between the nucleus and the cytoplasm in eukaryotic cells is mediated by the nuclear pore complex (NPC), which consists of 60-100 proteins. Small molecules (up to 70 kD) can pass through the nuclear pore by nonselective diffusion while larger molecules are transported by an active process. The protein encoded by this gene belongs to the importin alpha family, and is involved in nuclear protein import, but exhibits different nuclear localization signal binding specificity compared to other members of the family. A pseudogene of this gene has been defined on chromosome 5. [provided by RefSeq, Jul 2016],

**Function :** function:Functions in nuclear protein import.,similarity:Belongs to the importin alpha family.,similarity:Contains 1 IBB domain.,similarity:Contains 8 ARM repeats.,

**Subcellular Location :** Nucleus .

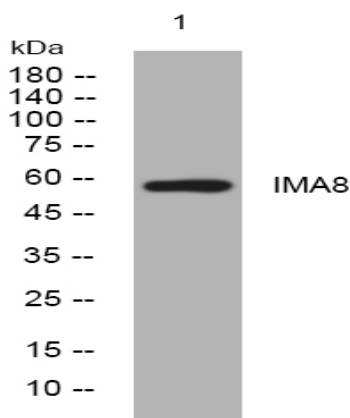
**Sort :** 8550

**No4 :** 1

**Host :** Rabbit

**Modifications :** Unmodified

## Products Images



Western blot analysis of lysates from MCF-7 cells, primary antibody was diluted at 1:1000, 4° over night