

## ASCC3 rabbit pAb

<b>Catalog No :</b>	YT6897
<b>Reactivity :</b>	Human;Mouse;Rat
<b>Applications :</b>	WB
<b>Target :</b>	ASCC3
<b>Gene Name :</b>	ASCC3 HELIC1
<b>Protein Name :</b>	ASCC3
<b>Human Gene Id :</b>	10973
<b>Human Swiss Prot No :</b>	Q8N3C0
<b>Mouse Gene Id :</b>	77987
<b>Mouse Swiss Prot No :</b>	E9PZJ8
<b>Rat Swiss Prot No :</b>	F1LPQ2
<b>Immunogen :</b>	Synthesized peptide derived from human ASCC3 AA range: 2053-2103
<b>Specificity :</b>	This antibody detects endogenous levels of ASCC3 at Human/Mouse/Rat
<b>Formulation :</b>	Liquid in PBS containing 50% glycerol, 0.5% BSA and 0.02% sodium azide.
<b>Source :</b>	Polyclonal, Rabbit,IgG
<b>Dilution :</b>	WB 1[?]500-2000
<b>Purification :</b>	The antibody was affinity-purified from rabbit antiserum by affinity-chromatography using epitope-specific immunogen.
<b>Concentration :</b>	1 mg/ml

**Storage Stability :** -15°C to -25°C/1 year(Do not lower than -25°C)

**Molecularweight :** 242kD

**Background :** This gene encodes a protein that belongs to a family of helicases that are involved in the ATP-dependent unwinding of nucleic acid duplexes. The encoded protein is the largest subunit of the activating signal cointegrator 1 complex that is involved in DNA repair and resistance to alkylation damage. Alternate splicing results in multiple transcript variants. [provided by RefSeq, Sep 2013],

**Function :** function:Enhances NF-kappa-B, SRF and AP1 transactivation.,similarity:Belongs to the helicase family.,similarity:Contains 2 helicase ATP-binding domains.,similarity:Contains 2 helicase C-terminal domains.,similarity:Contains 3 SEC63 domains.,subunit:Part of TRIP4 complex, that contains ASCC1, ASCC2 and ASCC3.,tissue specificity:Ubiquitous.,

**Subcellular Location :** Nucleus . Nucleus speckle . Cytoplasm, cytosol . Colocalizes with ALKBH3 and ASCC2 in nuclear foci when cells have been exposed to alkylating agents that cause DNA damage. .

**Expression :** Ubiquitous.

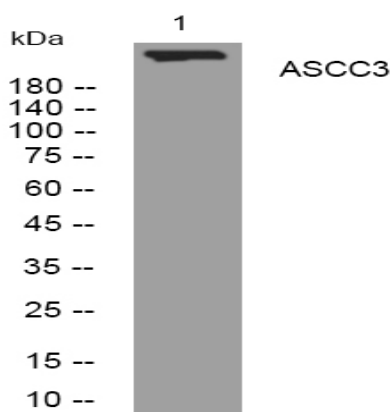
**Sort :** 2316

**No4 :** 1

**Host :** Rabbit

**Modifications :** Unmodified

## Products Images



Western blot analysis of lysates from K562 cells, primary antibody was diluted at 1:1000, 4° over night