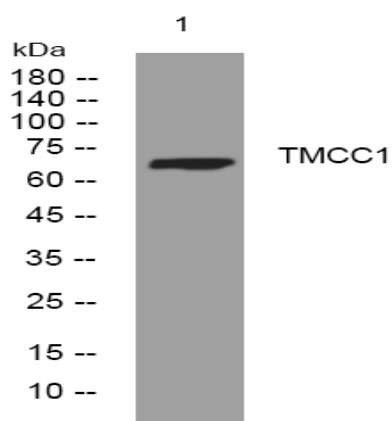


TMCC1 rabbit pAb

Catalog No :	YT6892
Reactivity :	Human;Mouse
Applications :	WB
Target :	TMCC1
Gene Name :	TMCC1 KIAA0779
Protein Name :	TMCC1
Human Gene Id :	23023
Human Swiss Prot No :	O94876
Mouse Gene Id :	330401
Mouse Swiss Prot No :	Q69ZZ6
Immunogen :	Synthesized peptide derived from human TMCC1 AA range: 275-325
Specificity :	This antibody detects endogenous levels of TMCC1 at Human/Mouse
Formulation :	Liquid in PBS containing 50% glycerol, 0.5% BSA and 0.02% sodium azide.
Source :	Polyclonal, Rabbit,IgG
Dilution :	WB 1:500-2000
Purification :	The antibody was affinity-purified from rabbit antiserum by affinity-chromatography using epitope-specific immunogen.
Concentration :	1 mg/ml
Storage Stability :	-15°C to -25°C/1 year(Do not lower than -25°C)

Molecularweight :	72kD
Function :	similarity:Belongs to the TEX28 family.,
Subcellular Location :	Endoplasmic reticulum membrane ; Multi-pass membrane protein . Specifically localizes to contact sites between the endoplasmic reticulum and endosomes that are spatially and temporally linked to endosome fission. .
Sort :	17228
No4 :	1
Host :	Rabbit
Modifications :	Unmodified

Products Images



Western blot analysis of lysates from KB cells, primary antibody was diluted at 1:1000, 4° over night