

## FAD1 rabbit pAb

<b>Catalog No :</b>	YT6889
<b>Reactivity :</b>	Human;Mouse
<b>Applications :</b>	WB
<b>Target :</b>	FAD1
<b>Fields :</b>	>>Riboflavin metabolism;>>Metabolic pathways;>>Biosynthesis of cofactors
<b>Gene Name :</b>	FLAD1 PP591
<b>Protein Name :</b>	FAD1
<b>Human Gene Id :</b>	80308
<b>Human Swiss Prot No :</b>	Q8NFF5
<b>Mouse Gene Id :</b>	319945
<b>Mouse Swiss Prot No :</b>	Q8R123
<b>Immunogen :</b>	Synthesized peptide derived from human FAD1 AA range: 480-530
<b>Specificity :</b>	This antibody detects endogenous levels of FAD1 at Human/Mouse
<b>Formulation :</b>	Liquid in PBS containing 50% glycerol, 0.5% BSA and 0.02% sodium azide.
<b>Source :</b>	Polyclonal, Rabbit,IgG
<b>Dilution :</b>	WB 1[?]500-2000
<b>Purification :</b>	The antibody was affinity-purified from rabbit antiserum by affinity-chromatography using epitope-specific immunogen.
<b>Concentration :</b>	1 mg/ml

**Storage Stability :** -15°C to -25°C/1 year(Do not lower than -25°C)

**Molecularweight :** 65kD

**Background :** This gene encodes the enzyme that catalyzes adenylation of flavin mononucleotide (FMN) to form flavin adenine dinucleotide (FAD) coenzyme. Alternatively spliced transcript variants encoding distinct isoforms have been observed. [provided by RefSeq, Jul 2008],

**Function :** catalytic activity:ATP + FMN = diphosphate + FAD.,cofactor:Magnesium.,domain:The molybdenum cofactor biosynthesis protein-like region may not be functional.,function:Catalyzes the adenylation of flavin mononucleotide (FMN) to form flavin adenine dinucleotide (FAD) coenzyme.,pathway:Cofactor biosynthesis; FAD biosynthesis; FAD from FMN: step 1/1.,similarity:In the C-terminal section; belongs to the PAPS reductase family. FAD1 subfamily.,similarity:In the N-terminal section; belongs to the moaB/mog family.,

**Subcellular Location :** [Isoform 1]: Mitochondrion matrix .; [Isoform 2]: Cytoplasm.

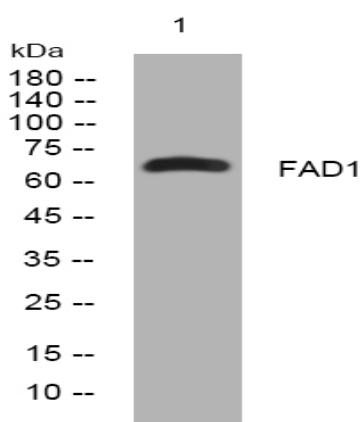
**Sort :** 5897

**No4 :** 1

**Host :** Rabbit

**Modifications :** Unmodified

## Products Images



Western blot analysis of lysates from MCF-7 cells, primary antibody was diluted at 1:1000, 4° over night