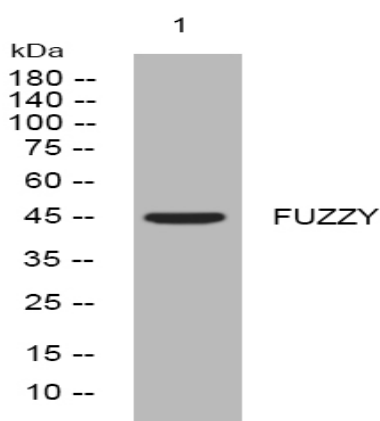


FUZZY rabbit pAb

Catalog No :	YT6888
Reactivity :	Human;Mouse;Rat
Applications :	WB
Target :	FUZZY
Gene Name :	FUZ FY
Protein Name :	FUZZY
Human Gene Id :	80199
Human Swiss Prot No :	Q9BT04
Mouse Gene Id :	70300
Mouse Swiss Prot No :	Q3UYI6
Rat Gene Id :	308577
Rat Swiss Prot No :	Q3B756
Immunogen :	Synthesized peptide derived from human FUZZY AA range: 92-142
Specificity :	This antibody detects endogenous levels of FUZZY at Human/Mouse/Rat
Formulation :	Liquid in PBS containing 50% glycerol, 0.5% BSA and 0.02% sodium azide.
Source :	Polyclonal, Rabbit,IgG
Dilution :	WB 1:500-2000
Purification :	The antibody was affinity-purified from rabbit antiserum by affinity-chromatography using epitope-specific immunogen.

Concentration :	1 mg/ml
Storage Stability :	-15°C to -25°C/1 year(Do not lower than -25°C)
Molecularweight :	46kD
Background :	This gene encodes a planar cell polarity protein that is involved in ciliogenesis and directional cell movement. Knockout studies in mice exhibit neural tube defects and defective cilia, and mutations in this gene are associated with neural tube defects in humans. Alternatively spliced transcript variants have been found for this gene. [provided by RefSeq, Jul 2012],
Function :	function:May be involved in cytoskeleton function and cell polarity in epithelial cells.,similarity:Belongs to the fuzzy family.,
Subcellular Location :	Cytoplasm . Cytoplasm, cytoskeleton . Cytoplasm, cytoskeleton, cilium basal body .
Sort :	6323
No4 :	1
Host :	Rabbit
Modifications :	Unmodified

Products Images



Western blot analysis of lysates from A431 cells, primary antibody was diluted at 1:1000, 4° over night