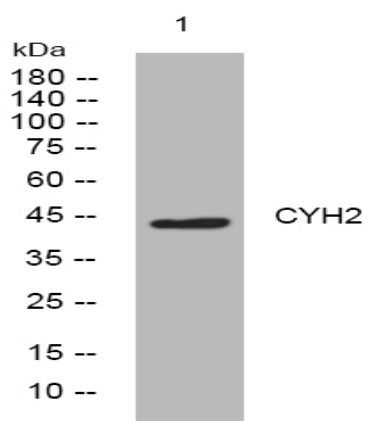


CYH2 rabbit pAb

Catalog No :	YT6886
Reactivity :	Human;Mouse;Rat
Applications :	WB
Target :	CYH2
Fields :	>>Phospholipase D signaling pathway;>>Endocytosis;>>Pathogenic Escherichia coli infection;>>Shigellosis;>>Salmonella infection
Gene Name :	CYTH2 ARNO PSCD2 PSCD2L
Protein Name :	CYH2
Human Gene Id :	9266
Human Swiss Prot No :	Q99418
Mouse Gene Id :	19158
Mouse Swiss Prot No :	P63034
Rat Gene Id :	116692
Rat Swiss Prot No :	P63035
Immunogen :	Synthesized peptide derived from human CYH2 AA range: 156-206
Specificity :	This antibody detects endogenous levels of CYH2 at Human/Mouse/Rat
Formulation :	Liquid in PBS containing 50% glycerol, 0.5% BSA and 0.02% sodium azide.
Source :	Polyclonal, Rabbit,IgG
Dilution :	WB 1:500-2000

Purification :	The antibody was affinity-purified from rabbit antiserum by affinity-chromatography using epitope-specific immunogen.
Concentration :	1 mg/ml
Storage Stability :	-15°C to -25°C/1 year(Do not lower than -25°C)
Molecularweight :	44kD
Background :	<p>The protein encoded by this gene is a member of the PSCD family. Members of this family have identical structural organization that consists of an N-terminal coiled-coil motif, a central Sec7 domain, and a C-terminal pleckstrin homology (PH) domain. The coiled-coil motif is involved in homodimerization, the Sec7 domain contains guanine-nucleotide exchange protein (GEP) activity, and the PH domain interacts with phospholipids and is responsible for association of PSCDs with membranes. Members of this family appear to mediate the regulation of protein sorting and membrane trafficking. The encoded protein exhibits GEP activity in vitro with ARF1, ARF3, and ARF6 and is 83% homologous to CYTH1. Two transcript variants encoding different isoforms have been found for this gene. [provided by RefSeq, Aug 2008],</p>
Function :	<p>function:Promotes guanine-nucleotide exchange on ARF1, ARF3 and ARF6. Promotes the activation of ARF through replacement of GDP with GTP.,similarity:Contains 1 PH domain.,similarity:Contains 1 SEC7 domain.,subunit:Heteromer. Composed of GRASP, CYTH2 and at least one GRM1.,tissue specificity:Ubiquitous.,</p>
Subcellular Location :	<p>Cell membrane ; Peripheral membrane protein . Cytoplasm . Cell projection . Cell projection, growth cone . Cell junction, tight junction . Cell junction, adherens junction . Both isoform 1 and isoform 2 are recruited to the cell membrane through its association with ARL4A, ARL4C and ARL4D. They require also interaction with phosphoinositides for targeting to plasma membrane (PubMed:17398095). In differentiating neuroblastoma cells, colocalizes with CCDC120 in both neurite shaft and growth cone areas. .</p>
Expression :	Widely expressed.
Sort :	4764
No4 :	1
Host :	Rabbit
Modifications :	Unmodified

Products Images



Western blot analysis of lysates from U2OS cells, primary antibody was diluted at 1:1000, 4° over night