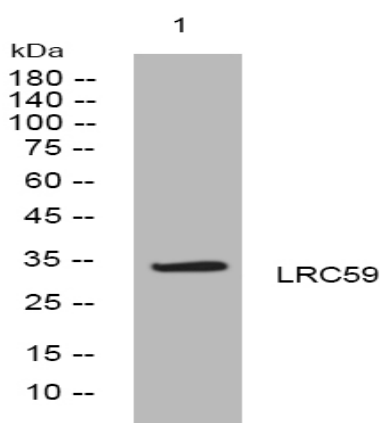


LRC59 rabbit pAb

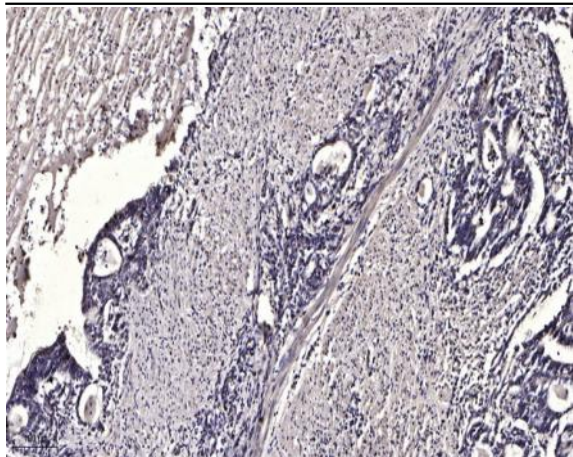
Catalog No :	YT6884
Reactivity :	Human;Mouse;Rat
Applications :	WB;IHC
Target :	LRC59
Gene Name :	LRRRC59 PRO1855
Protein Name :	LRC59
Human Gene Id :	55379
Human Swiss Prot No :	Q96AG4
Mouse Gene Id :	98238
Mouse Swiss Prot No :	Q922Q8
Rat Gene Id :	287633
Rat Swiss Prot No :	Q5RJR8
Immunogen :	Synthesized peptide derived from human LRC59 AA range: 110-160
Specificity :	This antibody detects endogenous levels of LRC59 at Human/Mouse/Rat
Formulation :	Liquid in PBS containing 50% glycerol, 0.5% BSA and 0.02% sodium azide.
Source :	Polyclonal, Rabbit,IgG
Dilution :	WB 1:500-2000;IHC 1:50-300
Purification :	The antibody was affinity-purified from rabbit antiserum by affinity-chromatography using epitope-specific immunogen.

Concentration :	1 mg/ml
Storage Stability :	-15°C to -25°C/1 year(Do not lower than -25°C)
Molecularweight :	34kD
Function :	similarity:Contains 5 LRR (leucine-rich) repeats.,subunit:Interacts with SGOL1.,
Subcellular Location :	Microsome membrane ; Single-pass type II membrane protein . Endoplasmic reticulum membrane; Single-pass type II membrane protein. Nucleus envelope. Localization in the nuclear envelope depends upon the nuclear import machinery, including KPNB1.
Expression :	Widely expressed.
Sort :	9245
No4 :	1
Host :	Rabbit
Modifications :	Unmodified

Products Images



Western blot analysis of lysates from U2OS cells, primary antibody was diluted at 1:1000, 4° over night



Immunohistochemical analysis of paraffin-embedded human Gastric adenocarcinoma. 1, Antibody was diluted at 1:200(4° overnight). 2, Tris-EDTA,pH9.0 was used for antigen retrieval. 3,Secondary antibody was diluted at 1:200(room temperature, 45min).