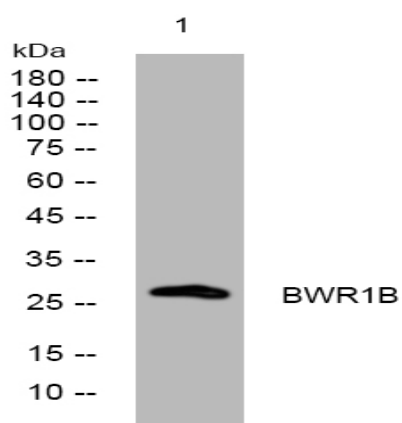


**BWR1B rabbit pAb**

<b>Catalog No :</b>	YT6880
<b>Reactivity :</b>	Human
<b>Applications :</b>	WB
<b>Target :</b>	BWR1B
<b>Gene Name :</b>	SLC22A18AS BWR1B BWSCR1B ORCTL2S SLC22A1LS
<b>Protein Name :</b>	BWR1B
<b>Human Gene Id :</b>	5003
<b>Human Swiss Prot No :</b>	Q8N1D0
<b>Immunogen :</b>	Synthesized peptide derived from human BWR1B AA range: 44-94
<b>Specificity :</b>	This antibody detects endogenous levels of BWR1B at Human
<b>Formulation :</b>	Liquid in PBS containing 50% glycerol, 0.5% BSA and 0.02% sodium azide.
<b>Source :</b>	Polyclonal, Rabbit,IgG
<b>Dilution :</b>	WB 1:500-2000
<b>Purification :</b>	The antibody was affinity-purified from rabbit antiserum by affinity-chromatography using epitope-specific immunogen.
<b>Concentration :</b>	1 mg/ml
<b>Storage Stability :</b>	-15°C to -25°C/1 year(Do not lower than -25°C)
<b>Molecularweight :</b>	28kD
<b>Function :</b>	tissue specificity:Most abundantly expressed in gastrointestinal tissues. Expressed at lower levels in kidney and placenta. Expressed in fetal brain, liver, placenta, kidneys and lung.,

<b>Expression :</b>	Most abundantly expressed in gastrointestinal tissues. Expressed at lower levels in kidney and placenta. Expressed in fetal brain, liver, placenta, kidney and lung.
<b>Sort :</b>	2906
<b>No4 :</b>	1
<b>Host :</b>	Rabbit
<b>Modifications :</b>	Unmodified

## Products Images



Western blot analysis of lysates from CACO2 cells, primary antibody was diluted at 1:1000, 4° over night