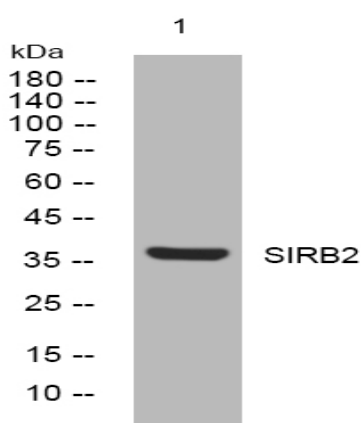


## SIRB2 rabbit pAb

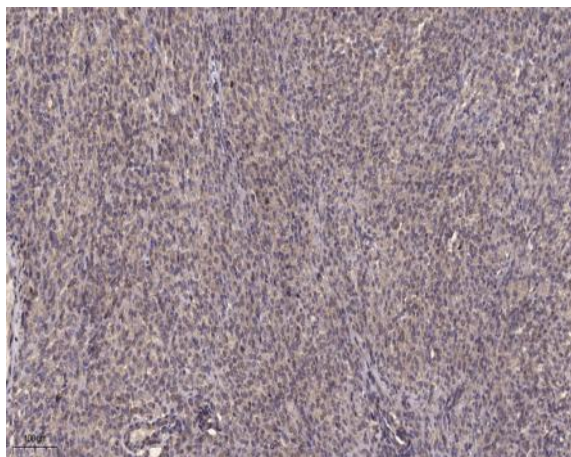
<b>Catalog No :</b>	YT6876
<b>Reactivity :</b>	Human
<b>Applications :</b>	WB;ELISA;IHC
<b>Target :</b>	SIRB2
<b>Gene Name :</b>	SIRPB2 PTPN1L PTPNS1L3
<b>Protein Name :</b>	SIRB2
<b>Human Gene Id :</b>	284759
<b>Human Swiss Prot No :</b>	Q5JXA9
<b>Immunogen :</b>	Synthesized peptide derived from human SIRB2 AA range: 48-98
<b>Specificity :</b>	This antibody detects endogenous levels of SIRB2 at Human
<b>Formulation :</b>	Liquid in PBS containing 50% glycerol, 0.5% BSA and 0.02% sodium azide.
<b>Source :</b>	Polyclonal, Rabbit,IgG
<b>Dilution :</b>	WB 1:500-2000;IHC 1:50-300; ELISA 2000-20000
<b>Purification :</b>	The antibody was affinity-purified from rabbit antiserum by affinity-chromatography using epitope-specific immunogen.
<b>Concentration :</b>	1 mg/ml
<b>Storage Stability :</b>	-15 °C to -25 °C/1 year(Do not lower than -25 °C)
<b>Molecularweight :</b>	38kD
<b>Function :</b>	similarity:Contains 2 Ig-like V-type (immunoglobulin-like) domains.,

<b>Subcellular Location :</b>	Membrane ; Single-pass type I membrane protein .
<b>Sort :</b>	16340
<b>No4 :</b>	1
<b>Host :</b>	Rabbit
<b>Modifications :</b>	Unmodified

## Products Images



Western blot analysis of lysates from HeLa cells, primary antibody was diluted at 1:1000, 4° over night



Immunohistochemical analysis of paraffin-embedded human Colon cancer. 1, Antibody was diluted at 1:200(4° overnight). 2, Tris-EDTA,pH9.0 was used for antigen retrieval. 3,Secondary antibody was diluted at 1:200(room temperature, 45min).