

PIGO rabbit pAb

Catalog No :	YT6874
Reactivity :	Human;Mouse
Applications :	WB;IHC
Target :	PIGO
Fields :	>>Glycosylphosphatidylinositol (GPI)-anchor biosynthesis;>>Metabolic pathways
Gene Name :	PIGO UNQ632/PRO1249
Protein Name :	PIGO
Human Gene Id :	84720
Human Swiss Prot No :	Q8TEQ8
Mouse Swiss Prot No :	Q9JJI6
Immunogen :	Synthesized peptide derived from human PIGO AA range: 950-1000
Specificity :	This antibody detects endogenous levels of PIGO at Human/Mouse
Formulation :	Liquid in PBS containing 50% glycerol, 0.5% BSA and 0.02% sodium azide.
Source :	Polyclonal, Rabbit,IgG
Dilution :	WB 1:500-2000;IHC 1:50-300
Purification :	The antibody was affinity-purified from rabbit antiserum by affinity-chromatography using epitope-specific immunogen.
Concentration :	1 mg/ml
Storage Stability :	-15°C to -25°C/1 year(Do not lower than -25°C)

Molecularweight : 120kD**Background :**

This gene encodes a protein that is involved in glycosylphosphatidylinositol (GPI)-anchor biosynthesis. The GPI-anchor is a glycolipid which contains three mannose molecules in its core backbone. The GPI-anchor is found on many blood cells and serves to anchor proteins to the cell surface. This protein is involved in the transfer of ethanolaminephosphate (EtNP) to the third mannose in GPI. At least three alternatively spliced transcripts encoding two distinct isoforms have been found for this gene. [provided by RefSeq, Jan 2011],

Function :

alternative products:Additional isoforms seem to exist,function:Ethanolamine phosphate transferase involved in glycosylphosphatidylinositol-anchor biosynthesis. Transfers ethanolamine phosphate to the GPI third mannose which links the GPI-anchor to the C-terminus of the proteins by an amide bond.,pathway:Glycolipid biosynthesis; glycosylphosphatidylinositol-anchor biosynthesis.,similarity:Belongs to the PIGG/PIGN/PIGO family. PIGO subfamily.,subunit:Forms a complex with PIGF. PIGF is required to stabilize PIGO.,

Subcellular Location :

Endoplasmic reticulum membrane ; Multi-pass membrane protein .

Sort :

12698

No4 :

1

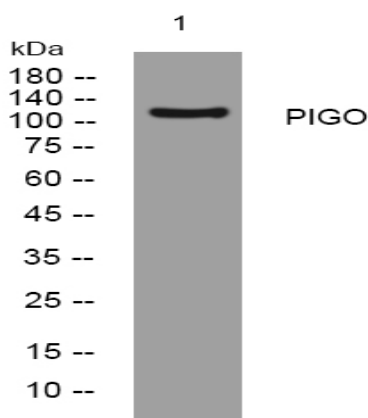
Host :

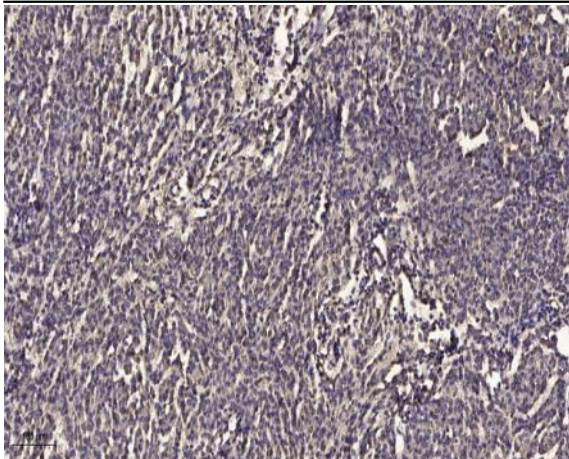
Rabbit

Modifications :

Unmodified

Products Images





Immunohistochemical analysis of paraffin-embedded human meningioma. 1, Antibody was diluted at 1:200(4° overnight). 2, Tris-EDTA,pH9.0 was used for antigen retrieval. 3,Secondary antibody was diluted at 1:200(room temperature, 45min).